



PRODUCT CATALOG

CLINICAL

Shade Selection	
Chromascop	5
A–D Shade Guide with Bleach Shades	
Composites	8
Tetric Evo-Line	
<i>Bulk-fill composites</i>	
Tetric EvoFlow Bulk Fill	
Tetric EvoCeram Bulk Fill	
<i>Conventional composites</i>	
Tetric EvoFlow	
Tetric EvoCeram	
IPS Empress Direct	
IPS Empress Direct Flow	
Tetric	
Heliomolar	
Heliomolar HB	
Heliomolar Flow	
<i>Characterization</i>	
IPS Empress Direct Color	
IPS Empress Direct Opaque	
<i>Compomers</i>	
Compoglass F	
Compoglass Flow	
Liners	24
Vivaglass Liner	
Adhesives/Etchants	25
Adhese Universal	
Excite F	
Excite F DSC	
Syntac	
Heliobond	
Total Etch	
Email Preparator blue	
Amalgams	30
Amalcap Plus	
Vivacap	
IPS Empress CAD	31
IPS Empress	
IPS Empress CAD for CEREC Basic Kit A–D	
IPS Empress CAD for CEREC Trial Kit A–D	
IPS Empress CAD HT	
IPS Empress CAD LT	
IPS Empress CAD Multi	
IPS Empress CAD Probe Blocks	
IPS Empress Universal Shade/Stains Kit	
IPS Empress Universal Shades	
IPS Empress Universal Stains	
IPS Empress Universal Glaze	
IPS Empress Universal Glaze Spray	
IPS Empress Add-On 770°C/1418°F	
IPS Empress Esthetic Veneer Build-Up Liquid	
IPS Empress CAD HT/LT	
Material Shade Guide A–D/BL	
IPS Empress Packaging	
IPS e.max CAD	39
IPS e.max CAD	
IPS e.max CAD for CEREC and inLab Monolithic Solutions	
IPS e.max CAD for CEREC and inLab Abutment Solutions	
IPS e.max CAD Characterization Kit	
IPS e.max CAD Crystall./Shades	
IPS e.max CAD Crystall./Stains	
IPS e.max CAD Crystall./Glaze Paste	
IPS e.max CAD Crystall./Glaze Spray	
IPS e.max CAD Crystall./Glaze Liquid	
IPS e.max CAD Crystall./Add-On	
IPS e.max CAD Crystall./Add-On Liquid	
IPS e.max CAD Crystallization Tray	
IPS e.max CAD Speed Crystallization Tray	
IPS e.max CAD Crystallization Pin	
IPS e.max Press/CAD Shade Guide	
IPS e.max Packaging	
All-Ceramic Preparation Guide	
Accessories CAD/CAM	50
IPS e.max ZirCAD LT for Cerec	
IPS Ceramic Etching Gel	
Tweezers	
IPS Contrast Spray Chairside	
IPS Object Fix Flow / Putty	
IPS Natural Die Material	
IPS Natural Die Material Shade Guide	
Temporary Restorations	52
Telio CS C&B	
Telio CS Link	
Telio CS Cem Implant	
Telio CS Desensitizer	
Telio CS Inlay	
Telio CS Onlay	
Telio CAD for CEREC Starter Kit	
Telio CAD for CEREC and inLab Blocks	
Cementation Materials	59
Variolink Esthetic	
Multilink Automix	
Multilink Hybrid Abutment	
SpeedCEM Plus	
Vivaglass CEM PL	
Monobond Etch & Prime	
Monobond Plus	
Ivoclean	
Liquid Strip	
Heliosit Orthodontic	
Ceramic Repair	72
Ceramic Repair	

Endodontics/Core Build-Up

ApexCal	73
Apexit Plus	
FRC Postec Plus	
MultiCore	

Impression Materials

Virtual	76
Virtual 380	
Virtual CADbite Registration	

Equipment

Bluephase Style	79
Bluephase Style 20i	
Bluephase Style M8	
Bluephase Meter II	
Silamat S6	
Programat CS2	
Programat CS3	
Vacuum Pump VP5	
Vacuum Pump VP3 easy	
Programat Firing Tray Kit 2	
Metal Pins for Firing Tray	
Ceramic Sleeves for Metal Pins	
Automatic Temperature Checking Set 2 "ATK2"	
Firing Tongs	
UTS 3D Universal Transferbow System	
Gnathometer M Typ 2	
Stratos 100	
Stratos 200	
Stratos 300	

Professional Care Products

CRT bacteria	93
Cultura Incubator	
CRT buffer	
Plaque Test	
Proxyt	
Cervitec F	
Cervitec Plus	
Cervitec Liquid	
Cervitec Gel	
Fluor Protector S	
Fluor Protector	
Fluor Protector Gel	
Helioseal / Helioseal F / Helioseal Clear	
VivaSens	

**Tooth Whitening
Tooth Jewellery**

VivaStyle	103
VivaStyle Paint On Plus	
VivaStyle 10% / 16%	
Skyce	

Clinical Accessories

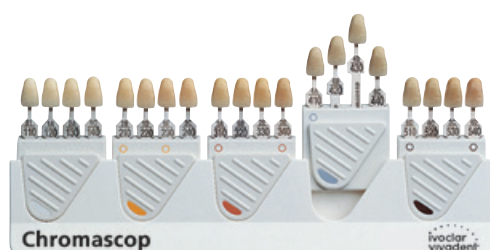
OptraGate	105
OptraDam Plus	
OptraSculpt Next Generation	
OptraSculpt Pad	
OptraSculpt	
OptraPol	
OptraFine	
Astropol	
Politip	
OptraStick	
Cavifil Injector	
VivaPad	
Polyart Mixing Pad	
Brush Holders	
Brushes, hard	
Brushes, soft	
Vivabrush	
VivaBrush G	
Vivadent Applicator	
Cannulas	

* Chromascop®

The Chromascop shade guide is an instrument for the shade selection of various Ivoclar Vivadent products shaded according to the Chromascop shade system. The 20 shades are divided into five clearly arranged, removable shade groups.

Advantages:

- Easy handling
- Logical, chromatic arrangement of shades
- Disinfectable



Delivery form

Chromascop Shade Guide	1x	529479
------------------------	----	--------

* A–D Shade Guide with Bleach Shades

The A-D Shade Guide is an instrument for the selection of tooth shades according to the A–D and Bleach BL shade system.

The 16 basic shades in the shade groups A, B, C and D, supplemented by the 4 modern Bleach shades BL 1 to BL 4, are practical to use and represent the ideal tool for dentists and dental technicians.

Advantages:

- 16 A–D shades
- 4 Bleach shades
- Common shade standard for Ivoclar Vivadent products
- Sterilizable
- Autoclavable



Delivery form

A–D Shade Guide		
Complete (16 and 4 shades)	1x	628587
Complete with name embossing	1x	637531
Basic (16 shades)	1x	628623
Bleach (4 shades)	1x	628605

* Can only be ordered from authorized dealers of Ivoclar Vivadent technical.



Direct Restoratives

PREPARE

BOND

FILL

Isolation

Adhesives

Flowable Composites

Sculptable Composites

OptraGate®

The gentle solution for a better view



Advantages:

- Efficient treatment and easier relative isolation
- Enlarged operating field and easy access to cavity
- Increased comfort for patients
- Attractive colours for enhanced patient compliance among children

Further products:

- OptraDam® Plus

Adhese® Universal

Universal adhesion with advanced delivery



Advantages:

- Efficient delivery – up to 190 single-tooth applications per 2 ml VivaPen®
- Universal application – for all bonding and etching techniques
- Predictable results – high bond strength on wet & dry dentin and enamel
- Desensitizing effect - integrated protection against hypersensitivity

Further products:

- Total Etch
- Syntac®
- ExciTE® F
- ExciTE® F DSC

Tetric EvoFlow® Bulk Fill/ Tetric EvoCeram® Bulk Fill

The highly efficient posterior composite!



Advantages:

- Increment thicknesses of up to 4 mm due to the highly reactive light initiator Ivocerin®
- Dentin- or enamel-like volume replacement
- 10 seconds ($\geq 1,000$ mW/cm²)
- 47% less time required than with the conventional technique*

Further products:

- Tetric EvoCeram®
- Tetric EvoFlow®
- IPS Empress® Direct
- Tetric®

* compared to Tetric EvoFlow® and Tetric EvoCeram®. Data available on request.



CURE

FINISH

MAINTAIN

Manual Instruments

Curing Lights

Polisher

Care Products

OptraSculpt®

Efficient contouring due to non-stick surface



Advantages:

- Efficient, easy contouring in the anterior and posterior region due to specially adjusted attachment shapes
- Homogeneous surface texture

Bluephase® Style

The smallest LED for every use



Advantages:

- Every hand – comfortable to hold for men and women
- Every material – universal use due to Polywave® LED with broadband spectrum
- Every time – optional corded operation due to Click & Cure

OptraPol®

Simply brilliant – in just one step



Advantages:

- Smooth surface finish and perfect lustre due to high content of diamond particles
- Quick high-gloss polishing in only one working step
- Multiple use for greater cost-efficiency

Fluor Protector S

Homogeneous protective varnish in a dispensing tube



Advantages:

- Immediate fluoridation of enamel
- High-yielding fluoride depot
- Mild taste

Further products:

- OptraSculpt®

Further products:

- Bluephase® Style 20i
- Bluephase® Style M8

Further products:

- Astropol®

Further products:

- Proxyt®

Natural-looking **esthetics** –
efficiently produced

Tetric Evo-Line



Tetric EvoCeram®



Tetric EvoFlow®



Tetric EvoCeram® Bulk Fill



Tetric EvoFlow® Bulk Fill

ivoclar
vivadent[®]
passion vision innovation

Tetric Evo-Line

One solution for all cavity classes

The Tetric Evo line of products combines clinical reliability and durability with innovation. The four composites of the Tetric Evo family provide high-quality esthetic restorations for all cavity classes. Gains in efficiency can be achieved by using the correct combination of composites, depending on the specific cavity class.

All four composites are now offered together in new system kits, which include an overview of their indications and possibilities of combination to enable users to see which material is best used when and where.

Each system kit comprises:

- Tetric EvoCeram – sculptable, for conventional layering techniques
- Tetric EvoFlow – flowable, for conventional layering techniques
- Tetric EvoCeram Bulk Fill – sculptable, application in increments of up to 4 mm
- Tetric EvoFlow Bulk Fill – flowable, application in increments of up to 4 mm
- Adhese® Universal VivaPen – the universal adhesive system

The kits are available in Cavifils or syringes.

Delivery form

Syringes

Tetric Evo-Line System Kit syringe **686707**

4 syringes, 3 g each (1x A2, A3, A2 Dentin Tetric EvoCeram, 1x ¹⁰A Tetric EvoCeram Bulk Fill)
2 Luerlock syringes, 2 g each (1x A3 Tetric EvoFlow, 1x ¹⁰A Tetric EvoFlow Bulk Fill)
1 VivaPen Adhese Universal, 2 ml each
var. accessories

Empty: Tetric Evo-Line System Kit syringe **688776**

Packaging materials only, without Instructions for Use, without materials, without accessories

Cavifils

Tetric Evo-Line System Kit Cavifil **686718**

55 Cavifils, 0.2 g each (10 x ¹⁰A Tetric EvoCeram Bulk Fill, 10 x ¹⁰A Tetric EvoFlow Bulk Fill, 10 x A2, A3 Tetric EvoCeram, 5 x A2 Dentin Tetric EvoCeram, 10 x A3 Tetric EvoFlow)
1 VivaPen Adhese Universal, 2 ml each
var. accessories

Empty: Tetric Evo-Line System Kit Cavifil **688777**

Packaging materials only, without Instructions for Use, without materials, without accessories



Insert with recommendations included



Tetric EvoFlow® Bulk Fill

Flowable and highly efficient 4-mm bulk-fill composite suitable as a first volume layer in Class I and II restorations.



Indications:

- As a first layer / first increment in composite restorations of Class I and II in permanent teeth
- Restoration of deciduous teeth

Tetric EvoFlow® Bulk Fill restorations are capped with e.g. Tetric EvoCeram® Bulk Fill.

Advantages:

- Dentin-like volume replacement material that can be placed in increments of up to 4 mm due to the highly reactive light initiator Ivocerin® and Aessencio technology
- Maximum esthetic results, especially in cases with dentin discoloration
- Short curing time of 10 seconds ($\geq 1,000 \text{ mW/cm}^2$)
- Up to 47% savings in time compared to conventional composites*
- Optimum marginal quality due to low shrinkage and low shrinkage stress
- Excellent affinity to cavity walls and self-levelling properties
- Based on the proven sculptable volume replacement composite Tetric EvoCeram Bulk Fill

*compared to Tetric EvoFlow and Tetric EvoCeram. Data is available upon request.

Shades:

Three universal shades which demonstrate dentin-like translucency:

- [®]A: Universal A shade
- [®]B: Universal B shade
- [®]W: White shade for deciduous teeth or light-coloured permanent teeth

Delivery form

Syringes

Refill	1 x 2 g	see p. 14
1 Syringe, 2 g each (3 shades)		

Cavifils

Refill	20 x 0.2 g	see p. 14
20 Cavifils, 0.2 g each (3 shades)		

Shade Guide	1x	667472
Application tips \varnothing 1.2 mm (black)	1 x 20	669838

Tetric EvoCeram® Bulk Fill

Sculptable and highly efficient 4-mm bulk-fill composite for the posterior region.



Indications:

- Restoration of deciduous teeth
- Restoration of posterior teeth (Classes I and II, including reconstruction of individual cusps)
- Class V restorations (cervical caries, root erosion, wedge-shaped defects)
- Reconstructive build-up
- Extended fissure sealing in molars and premolars

Advantages:

- Enamel-like volume replacement material that can be placed in increments of up to 4 mm due to the highly reactive light initiator Ivocerin®
- Short curing time of 10 seconds ($\geq 1,000$ mW/cm²)
- Up to 47% savings in time compared to conventional composites*
- Optimum marginal quality due to low shrinkage and low shrinkage stress
- Long working and modelling time under operator or ambient light
- Convenient handling, non-slump consistency and optimum adaptation to cavity walls.
- Based on the universal composite Tetric EvoCeram®, which has been proven a million times over

*compared to Tetric EvoFlow and Tetric EvoCeram. Data is available upon request.

Shades:

Three universal shades which demonstrate enamel-like translucency:

- ^{IV}A: Universal A shade
- ^{IV}B: Universal B shade
- ^{IV}W: White shade for deciduous teeth or light-coloured permanent teeth

Delivery form

Syringes

Refill	1 x 3 g	see p. 14
1 Syringe, 3 g each (3 shades)		
Refill	3 x 3 g	see p. 14
3 Syringes, 3 g each (3 shades)		
Jumbo Refill	10 x 3 g	649792
10 Syringes, 3 g each (^{IV} A)		

Cavifils

Refill	20 x 0.2 g	see p. 14
20 Cavifils, 0.2 g each (3 shades)		
Jumbo Refill	150 x 0.2 g	649793
150 Cavifils, 0.2 g each (^{IV} A)		
Shade Guide	1x	639035

Tetric EvoFlow®

Flowable, light-curing, radiopaque composite for direct restorative therapy and the cementation of ceramic and composite restorations.



Indications:

- Initial layer of Class I to V restorations
- Anterior restorations (Class III and IV)
- Class V restorations (cervical caries, root erosion, wedge-shaped defects)
- Small restorations of all types
- Extended fissure sealing
- Splinting of mobile teeth
- Blocking out of undercuts
- Adhesive cementation of translucent indirect composite or ceramic restorations
- Repair of composite and ceramic veneers

Advantages:

- Flowable when desired, stable as required due to the Viscosity Controller
- Ideal consistency for all composite indications
- Top-selling flowable in Europe
- Radiopacity unmatched by any other flowable composite
- 0.9-mm tip for precision application even in hard-to-reach cavities

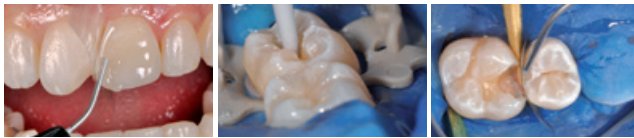
Shades:

Dentin shades: A2, A3.5, B2

Enamel shades: A1, A2, A3, A3.5, A4, B1, B3

Highly translucent incisal shade: T

Bleach shades: Bleach XL, Bleach L, Bleach M



Dr Eduardo Mahn, Santiago, Chile

Delivery form

Syringes

Assortment	8 x 2 g	595951
-------------------	----------------	---------------

1 x A1, 1 x A2, 1 x A3, 1 x A3.5, 1 x A4, 1 x B3, 1 x T, 1 x A3.5 Dentin
Tetric EvoFlow Shade Guide, Tetric EvoFlow Cannulas

Refill	1 x 2 g	See p. 14
---------------	----------------	------------------

1 Syringe, 2 g each (14 shades)

Cavifils

Assortment	40 x 0.2 g	595950
-------------------	-------------------	---------------

5 x A1, 5 x A2, 5 x A3, 5 x A3.5, 5 x A4, 5 x B3, 5 x T, 5 x A3.5 Dentin
Tetric EvoFlow Shade Guide

Refill	20 x 0.2 g	See p. 14
---------------	-------------------	------------------

20 Cavifils, 0.2 g each (14 shades)

Shade Guide	1x	595952
--------------------	-----------	---------------

Application tips ø 0.9 mm (black)	1 x 20	634849
--	---------------	---------------

Tetric EvoCeram®

Light-curing, universal composite for high-end standard restorations in the anterior and posterior region.



THE DENTAL ADVISOR
8-year Clinical Performance
++++



Indications:

- Restorations of deciduous teeth
- Restorations in the posterior region (Classes I and II)
- Anterior restorations (Classes III, IV)
- Class V restorations (cervical caries, root erosion, wedge-shaped defects)
- Veneering of discoloured anterior teeth
- Splinting of mobile teeth
- Extended fissure sealing in molars and premolars
- Repair of composite and ceramic veneers
- Build-ups for transparent, removable Invisalign® orthodontic retainers

Advantages:

- Universal composite for anterior and posterior restorations
- Proven clinical performance with over 100 million restorations placed worldwide
- More working time due to the patented light sensitivity filter
- Natural shade blend with surrounding dentition ensures outstanding restorative results

Shades:

Dentin shades: A2, A3.5, A4, B2

Enamel shades: A1, A2, A3, A3.5, A4, B1, B2, B3, C1, C2, C3, D2, D3

Highly translucent Incisal shade: T

Bleach shades: Bleach XL, Bleach L, Bleach M, Bleach I

Tetric EvoCeram®

10 YEARS
OF CLINICAL EVIDENCE



Preoperative situation 2004

Final picture taken in 2004

Recall examination 2014

Dr Arnd Peschke,
Ivoclar Vivadent AG,
Liechtenstein



Preoperative situation 2005

Final picture taken in 2005

Recall examination 2014

Prof. Dr Jürgen Manhart,
Germany

Delivery form

Syringes

Assortment	8 x 3 g	590290
1 x A1, 1 x A2, 1 x A3, 1 x A3.5, 1 x A4, 1 x B3, 1 x C3, 1 x D3 Tetric EvoCeram Shade Guide		
Refill	3 x 3 g	See p. 14
3 Syringes, 3 g each (22 shades)		
Refill	1 x 3 g	See p. 14
1 Syringe, 3 g each (22 shades)		
Jumbo Refill	10 x 3 g	
A2		642042
A3		642043
A2, A3	5 x 3 g each	637247

Cavifils

Assortment	40 x 0.2 g	590291
5 x A1, 5 x A2, 5 x A3, 5 x A3.5, 5 x A4, 5 x B3, 5 x C3, 5 x D3 Tetric EvoCeram Shade Guide		
Refill	20 x 0.2 g	See p. 14
20 Cavifils, 0.2 g each (22 shades)		
Shade Guide	1x	590292
Jumbo Refill	150 x 0.2 g	
A2		642040
A3		642041
A2, A3	75 x 0.2 g each	637255

Composites										Compomers	
IPS Empress® Direct Syringe 1 x 3 g (32 shades)	IPS Empress® Direct Cavifils 10 x 0.2 g (32 shades)	IPS Empress® Direct Flow Syringe 1 x 1.8 g (3 shades)	Tetric® Syringe 1 x 3 g (10 shades) Syringes 3 x 3 g (Basic White)	Tetric® Cavifils 20 x 0.2 g (10 shades) Cavifils 60 x 0.2 g (Basic White)	Heliomolar® Syringe 1 x 3 g (11 shades)	Heliomolar® Cavifils 20 x 0.25 g (11 shades)	Heliomolar® HB Syringe 1 x 3 g (11 shades)	Heliomolar® HB Cavifils 20 x 0.25 g (11 shades)	Heliomolar®Flow Syringe 1 x 1.6 g (7 shades)	Compoglass® F Cavifils 20 x 0.25 g (6 shades)	Compoglass® Flow Cavifils 20 x 0.25 g (2 shades)
					550555	550558			557029	546979	
627232	627270		612446	612456	532686	541501	559644	560066	557030	546980	
627233	627271		612447	612457	532687	541502	560195	560067	557031	546981	550167
627234	627272		612448	612458	532685	541503	560196	560068	557032	546982	550168
627235	627273		612449	612459						546983	
627236	627274		612450	612460						546985	
627237	627275						560197	560069			
627238	627276		612452	612462							
627239	627277		612451	612461							
627240	627278										
627241	627279										
627242	627280										
627243	627281				532692	541508					
627244	627282										
627245	627283				532691	541506			557033		
627247	627285	635341					560202	560074			
627246	627284										
627220	627258										
627221	627259										
627222	627260										
627624	627623		612453	612463							
627223	627261										
627224	627262										
627225	627263										
627226	627264										
627227	627265										
627228	627266										
627229	627267										
			612467	612445							
627230	627268										
627231	627269										
					550556	550559					
					550557	550560			557035		
			612454	612464							
627248	627286										
627249	627287	635343									
627250	627288	635342									
							563478	563480			

The only Direct Composite that can be called Empress®

Confidence

Reliability

Esthetics

The esthetics of ceramic with the convenience of composite.

- Exceptional Handling
- Simplified Application
- True-To-Nature™ Shades
- Superior Polish



Empress® Direct

Direct Esthetic Composite



IPS Empress® Direct

Light-curing composite for the direct highly esthetic restorative procedures.



before



after

Dr Arnd Peschke,
Ivoclar Vivadent AG,
Liechtenstein

Indications:

- Anterior restorations (Class III and IV)
- Posterior restorations (Class I, II)
- Cervical restorations (Class V, e.g. cervical caries, root erosion, wedge-shaped defects)
- Adjustment of tooth position and shape (e.g. diastema closure, closure of interdental “black triangles”, lengthening of the incisal edge)
- Direct veneers

Advantages:

- Wide range of indications for anterior and posterior teeth
- Wide range of shades in various degrees of translucency
- Not bound to one given layering technique
- Good polishing properties and high surface lustre
- Lifelike fluorescence
- Low sensitivity to light
- Outstanding radiopacity
- Compatible with Tetric EvoFlow® and IPS Empress® Direct Color
- The shade guide of the system is autoclavable and made of ceramic: the shade guide retains its precision over many years as the shade samples do not fade if they are exposed to light

Shades:

Dentin shades:

A1, A2, A3, A3.5, A4, IVA5, IVA6, B1, B2, C3, D2, Bleach L, Bleach XL

Enamel shades:

A1, A2, A3, A3.5, A4, B1, B2, B3, B4, C1, C2, C3, D2, D3, Bleach L, Bleach XL

Translucent: Trans 20, Trans 30, Trans Opal

Delivery form

Syringes

Basic Kit	8 x 3 g	627218
Dentin: A1, A2, A3 Enamel: A1, A2, A3 Translucent: Trans 30, Trans Opal var. accessories		
Basic Kit (without shade guide)	8 x 3 g	635243
Dentin: A1, A2, A3, A3.5 Enamel: A1, A2, A3, A3.5 var. accessories		
Refill	1 x 3 g	See p. 15
1 syringe 3 g each (32 shades)		
Shade Guide IPS Empress Direct Dentin	1x	627214
Shade Guide IPS Empress Direct Enamel	1x	627215

Cavifils

Basic Kit	80 x 0.2 g	627217
Dentin: A1, A2, A3 Enamel: A1, A2, A3 Translucent: Trans 30, Trans Opal var. accessories		
Basic Kit (without shade guide)	80 x 0.2 g	635241
Dentin: A1, A2, A3, A3.5 Enamel: A1, A2, A3, A3.5 var. accessories		
Refill	10 x 0,2 g	see p. 15
10 Cavifils 0.2 g each (32 shades)		

IPS Empress® Direct Flow

IPS Empress® Direct Flow is a light-curing flowable nano-hybrid composite available in three effect shades. This composite is used for the creation of highly esthetic restorations in the anterior region.



Indications:

- For creating lifelike esthetic effects in the incisal third
- Anterior restorations (Classes III, IV)
- Small restorations of all types
- Repair of composite/ceramic veneers

Advantages:

- Ideal addition to the IPS Empress Direct range of materials for the creation of special effects
- Unique Trans Opal Flow shade for a lifelike esthetic opalescence
- Lifelike translucency for the optimum reproduction of the incisal area
- Optimum surface affinity while ensuring stability
- Ideal consistency for contouring with the brush
- Excellent polishability

Shades:

Trans Opal, Trans 30, Bleach XL

Delivery form

Syringes

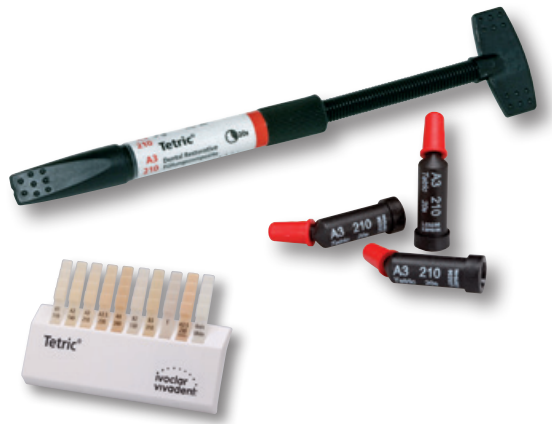
Refill	1 x 1.8 g	See p. 15
--------	-----------	-----------

1 syringe 1.8 g each (3 shades)

Application tips ø 0.9 mm (black)	1 x 20	634849
-----------------------------------	--------	--------

Tetric®

Light-curing, universal microhybrid composite with a special filler composition. Available in syringes and cavifils.



Indications:

- Anterior and posterior restorations

Advantages:

- Excellent working properties
- Does not stick to the instrument
- Optimum modelling properties
- High abrasion resistance
- Very high radiopacity
- Fluoride release
- Natural shade effect (3 degrees of translucency and 10 shades available)
- Stability of shade

Shades:

Universal shades: A1, A2, A3, A3.5, A4, B2, B3

Highly translucent enamel shade: T

Dentin shade: A3.5 Dentin

Basic White



before



after



before



after: with Tetric Basic White

Delivery form

Syringes

Refill	1 x 3 g	See p. 15
1 Syringe, 3 g each (9 shades)		

Refill	3 x 3 g	See p. 15
3 Syringes, 3 g each (Basic White)		

Cavifils

Refill	20 x 0.2 g	See p. 15
20 Cavifils, 0.2 g each (9 shades)		

Refill	60 x 0.2 g	See p. 15
60 Cavifils, 0.2 g each (Basic White)		

Shade Guide	1x	612524
--------------------	-----------	---------------

Heliomolar®

Light-curing universal microfilled composite in syringes and Cavifils.



Indications:

- Anterior and posterior restorations

Advantages:

- Easy direct application by means of Cavifils and the corresponding Injector
- Polishable to a high gloss; stable shade
- Excellent marginal adaptation and durable marginal seal
- High stability of shape and durable contact points
- High radiopacity and continuous fluoride release
- Excellent abrasion resistance

Shades:

105/–, 110/A1, 110T/A1T, 140/A2, 210/A3, 410/D3, 420T/–, 510/C3

Delivery form

Syringes

Refill	1 x 3 g	See p. 15
1 Syringe, 3 g each (8 shades)		

Cavifils

Refill	20 x 0.25 g	See p. 15
20 Cavifils, 0.25 g each (8 shades)		
Shade Guide	1x	550577

Heliomolar® HB

Fast, light-curing, high-viscosity, micro-filled composite material based on mouldable ceramics technology in syringes and Cavifils.



before



after

Indications:

- Restorations in the posterior region (Classes I and II, also occlusion-bearing)
- Restorations in deciduous dentitions

Advantages:

- Easy handling characteristics thanks to high viscosity
- Simplified creation of proximal contact areas
- High abrasion resistance
- High radiopacity (265% Al)
- Good polishing
- Low shrinkage
- Available in syringes or specifically designed Cavifils

Shades:

110/A1, 140/A2, 210/A3, B1, 420T/GE, TW

Delivery form

Syringes

Refill	1 x 3 g	See p. 15
1 Syringe, 3 g each (6 shades)		

Cavifils

Refill	20 x 0.25 g	See p. 15
20 Cavifils, 0.25 g each (6 shades)		

Heliomolar® Flow

Light-curing flowable microfilled composite in syringes.



Indications:

- Cervical restorations
- Anterior restorations
- Small restorations in the posterior region
- Extended fissure sealing in molars and premolars
- Repair of composite and ceramic veneers
- Blocking out of undercuts
- Adhesive cementation of indirect composite or ceramic restorations
- Splinting of mobile teeth
- As initial layer under Class I and II restorations
- Finishing layer on viscous composite material

Advantages:

- Convenient syringes containing 1.6 g of material
- Very thin, pre-bent metal cannulas
- Easy access to mini-cavities
- Bubble-free direct application
- Accurate, economical application

Shades:

105/-, 110/A1, 140/A2, 210/A3, 410/D3, 420T/-

Delivery form

Refill	1 x 1.6 g	See p. 15
1 Syringe, 1.6 g each (6 shades)		

IPS Empress® Direct Color

For true-to-nature characterization.



Indications:

- Individual characterization of direct and lab-fabricated composite restorations
- Masking of discoloured tooth structure
- Characterization of CAD/CAM veneers fabricated chairside

Advantages:

- True-to-nature characterization of high-end composite and CAD/CAM-fabricated restorations
- User-friendly direct application without dilution
- High masking capability even when applied in thin layers
- Smooth consistency
- 0.4-mm tips for precise application
- The ideal complement to IPS Empress® Direct and IPS Empress CAD

Shades:

white, honey yellow, ochre, brown, violet, blue, grey

Delivery form

Syringes

Assortment		637898AN
IPS Empress Direct Color	7 x 1 g each	
Shades: white, honey yellow, ochre, brown, violet, blue, grey		
IPS Empress Direct Opaque	1 x 1.8 g	
var. accessories		

Refill	1 x 1 g	Possible applications	
white		<ul style="list-style-type: none"> • Imitating enamel stains • Simulating halo effects • Accentuating cusps and ridges 	637899
honey		<ul style="list-style-type: none"> • Emphasizing the dentin core • Highlighting fissures 	637900
ochre		<ul style="list-style-type: none"> • Imitating individual enamel characteristics 	637903
blue		<ul style="list-style-type: none"> • Simulating translucent enamel areas 	637901
violet		<ul style="list-style-type: none"> • Imitating opalescent areas 	637902
grey			637905
brown		<ul style="list-style-type: none"> • Imitating discoloured fissures, pits and enamel cracks 	637904

Application tips ø 0.4 mm (black) 1 x 20 634847

IPS Empress® Direct Opaque

IPS Empress Direct Opaque is a light-curing opaquing material suitable for masking exposed metal surface and discoloured tooth structure.



Indications:

- Masking of
- exposed metal surfaces when repairing damaged ceramic or composite veneers intraorally
 - discoloured tooth structure

Advantages:

- High masking capability even when applied in thin layers
- Universal opaque shade, no shade matching required

Shade:

opaque

Delivery form

Syringes

Assortment		637898AN
IPS Empress Direct Color	7 x 1 g each	
white, honey yellow, ochre, brown, purple, blue, grey		
IPS Empress Direct Opaque	1 x 1.8 g	
var. accessories		
Refill	1 x 1.8 g	637897AN
1 Syringe, 1.8 g (opaque)		
Application tips ø 0.9 mm (black)	1 x 20	634849

Compoglass® F

Light-curing, compomer-based restorative material in Cavifils.



Indications:

- Restorations in deciduous teeth
- Class III and V restorations
- Intermediate restorations

Advantages:

- Application without phosphoric acid etching possible
- High fluoride release
- Easy direct application by means of Cavifils and the corresponding Injector
- Excellent esthetic properties
- Easy contouring and polishing
- No rubber dam required

Shades:

105/–, 110/A1, 140/A2, 210/A3, 230/A3.5, 340/A4

Delivery form

Refill	20 x 0.25 g	See p. 15
20 Cavifils, 0.25 g each (6 shades)		

Compoglass® Flow

Light-curing, flowable compomer-based restorative material in Cavifils.



Indications:

- Restorations in deciduous teeth
- Class III and V restorations
- Intermediate restorations

Advantages:

- Ease of handling
- High fluoride release
- Reliable self-adaptation
- No material flowing away
- No trapping of air
- Excellent marginal seal
- Accurate direct application technique

Shades:

140/A2, 210/A3

Delivery form

Refill	20 x 0.25 g	See p. 15
20 Cavifils, 0.25 g each (2 shades)		

Vivaglass® Liner

Light-curing glass ionomer cement for bases/liners.



Advantages:

- Continuous fluoride release
- Good dentin adhesion
- Outstanding radiopacity
- Light-curing, thus easy to process

Delivery form

Intro Pack	1 x 10 g / 1 x 8 g	536452
Powder, Liquid, var. accessories		
Refill Powder	1 x 10 g	535840
Refill Liquid	1 x 8 g	535839

Adhese[®] Universal

The universal adhesive



Direct
Indirect
Total-Etch
Selective-Etch
Self-Etch
Wet & Dry



All in one click

- Up to 190 single-tooth applications per 2 ml VivaPen[®]*
- For direct and indirect bonding procedures and all etching protocols
- High bond strength on wet and dry dentin

* Data available upon request



ivoclar
vivadent[®]
passion vision innovation

Adhese® Universal

The universal adhesive

Adhese® Universal is a single-component, light-cured adhesive for direct and indirect bonding procedures that features compatibility with all etching techniques: self-etch, selective-enamel-etch and total-etch. Adhese Universal is available in the unique VivaPen® delivery for fast and convenient direct intra-oral application with minimal waste to optimize cost-effectiveness.



Indications:

- Direct-placed light-curing composite and compomer restorations.
- Core build-ups with light-, self- and dual-curing composites.
- Adhesive cementation of indirect restorations with light- and dual-curing luting composites.
- Intraoral repair of fractured composite and compomer restorations.
- Desensitization of hypersensitive cervical areas.
- Sealing of prepared tooth surfaces before temporary/permanent cementation of indirect restorations.

Advantages:

- Efficient delivery – up to 190 single-tooth applications per 2 ml VivaPen*
- Universal application – for all bonding and etching techniques
- Predictable results – high bond strength on wet & dry dentin and enamel
- Desensitizing effect - integrated protection against hypersensitivity

* Data available upon request

Delivery form

VivaPen®

Refill	1 x 2 ml	665156
Refill	3 x 2 ml	664505
System Kit	1 x 2 ml	664504
Starter Kit	1 x 0.5 ml	663717
Refill VivaPen snap-on cannulas	100x	627178
Refill VivaPen snap-on cannulas	300x	627161
Refill VivaPen protective sleeves	300x	627492

Bottle

Refill	1 x 5 g	663720
Refill	2 x 5 g	663721
Refill Vivadent applicators (green)	50x	664698

ExcITE® F

ExcITE® F is a light-curing, fluoride-releasing single-component adhesive that is suitable for the total-etch technique.



Indications:

- Direct light- and dual-cure composite and compomer restorations
- Adhesive luting of indirect restorations involving light-curing

Advantages:

- Convenient and economical application with the VivaPen
- Also available in bottles and single dose vessels
- High adhesion values on enamel and dentin
- Acetone-free (alcohol-based solvent)
- Fluoride release
- Reduced post-operative sensitivity
- Storage at room temperature

Delivery form

Intro Pack VivaPen®		627177
ExcITE F VivaPen	1 x 2 ml	
Total Etch Etching Gel	1 x 2 g	
var. accessories		
Refill VivaPen, var. accessories	1 x 2 ml	613724
Refill VivaPen, var. accessories	3 x 2 ml	626969
Refill VivaPen snap-on cannulas	100x	627178
Refill VivaPen snap-on cannulas	300x	627161
Refill VivaPen protective sleeves	300x	627492
Refill Bottle	1 x 5 g	630375
Refill Bottle	2 x 5 g	630376
Refill regular applicators (light blue)	50x	631699
Refill Single Dose	50 x 0.1 g	630377

ExcITE® F DSC

ExcITE® F DSC is a dual-cure, fluoride-releasing enamel and dentin adhesive that is suitable for the total-etch technique.



Regular Small/Endo

Indications:

- Adhesive cementation of root posts
- Adhesive cementation of indirect, metal-free translucent restorations with dual- or self-curing luting composites
- Direct restorations and core build-ups with dual- or self-curing composites

Advantages:

- Patented initiator-coated applicator brush
- Time-saving: one step, one coat
- No light-curing necessary
- High bonding values on enamel and dentin
- Single-dose presentation with applicators in two different sizes: Regular and Small / Endo
- Storage at room temperature

Delivery form

Refill		
Regular	20 x 0.1 g	634669
Regular	50 x 0.1 g	630378
Small/Endo	20 x 0.1 g	634668
Small/Endo	50 x 0.1 g	630380

Syntac®

Syntac® is the classic adhesive system for a chemically sound bond between the composite materials and the tooth structure.



Indications:

- Direct composite and compomer restorations in the anterior and posterior region
- Adhesive cementation of indirect restorations made of composite or ceramic

Advantages:

- For direct and indirect restorations
- Clinically proven for many years
- Reduction of post-operative sensitivity
- Excellent instant bond between dentin/enamel and composite
- High bond strength
- Storage at room temperature

Delivery form

Assortment	2 x 3 g / 1 x 6 g	532891
Syntac Primer, Syntac Adhesive, Heliobond, var. accessories		
Refill Primer	1 x 3 g	532893
Refill Adhesive	1 x 3 g	532892

Heliobond

Heliobond is a light-curing single-component bonding agent to optimize enamel etching with all light-curing restorative materials.



Indications:

- Adhesive for enamel bonding
- Together with Syntac also dentin bonding agent
- Cementation of tooth jewellery
- Transparent sealing of fissures and restorations
- As a bonding layer for the repair of composite, crown and bridge restorations

Advantages:

- For an optimum marginal seal between tooth and composite. Applied in conjunction with the enamel-etch technique
- Storage at room temperature

Delivery form

Refill	1 x 11 g	532906
Refill	1 x 6 g	532907

Total Etch

Total Etch is a 37% phosphoric acid gel.



Indications:

- Partial etching technique for adhesive restorations
- Total-etch technique for adhesive restorations
- Fissure sealings
- Cementation of brackets and tooth jewellery
- Adhesive cementation

Advantages:

- The conventional etching gel with balanced handling properties
- Strong contrast to the tooth
- Pre-bent metal cannulas for accurate application
- Jumbo delivery form to keep adequate amounts of gel in stock

Delivery form

Assortment Total Etch Jumbo	1 x 30 g / 2 x 2 g	558530
Total Etch Jumbo, Total Etch, var. accessories		
Refill	2 x 2 g	550588

Email Preparator blue

37% phosphoric acid in a liquid delivery form.



Indications:

- Enamel etching and dentin conditioning for sealants, composite restorations, and for the adhesive cementation of restorations.

Advantages:

- Micro-interlocking of Heliobond bonding agent with the etched enamel
- The material flows well into the fissures due to the low viscosity
- Reliable retention of the sealant, composite, and the seated restoration

Delivery form

Refill	1 x 6 g	533034
---------------	----------------	---------------

Amalcap® Plus

Non-gamma-2 silver amalgam alloy with spherical / irregular particles in self-activating capsules.

The alloy is composed of: Ag 70.1%, Sn 18.0%, Cu 11.9%



Indications:

- For restorations of molars and premolars

Advantages:

- High-silver amalgam without gamma-2-phase
 - High corrosion resistance and edge strength
 - Self-activating system with automatic activation during mixing in the Silamat.
- Two working times:
 ~ 3 min = fast
 ~ 4 min = regular

Delivery form

Refill	50 units	
Regular size 1		532287
Regular size 2		532288
Regular size 3		532289
Fast size 1		532281
Fast size 2		532282
Fast size 3		532283

Vivacap®

Non-gamma-2 silver amalgam alloy with spherical / irregular particles in self-activating capsules.

The alloy is composed of: Ag 46.5%, Sn 30%, Cu 23.5%



Indications:

- For restorations of molars and premolars

Advantages:

- High-resistance amalgam restorations without gamma-2-phase
- Good carving and modelling properties
- Carving time of approx. 4 minutes
- Durable restorations with glossy surfaces
- Tight marginal seal
- Slight setting expansion enhances marginal adaptation

Delivery form

Refill	50 units	
Size 1		532321
Size 2		532322
Size 3		532323




* IPS Empress®

IPS Empress® ceramic material has been known and established for processing in the laboratory for 20 years. Since the introduction of IPS Empress CAD, esthetic restorations may also be fabricated in the dental office by means of CAD/CAM. Moreover, the IPS Empress family is supplemented by a composite for direct restorative therapy: IPS Empress Direct (see under Composites).

IPS Empress CAD blocks are suitable for the fabrication of all-ceramic inlays, onlays, veneers, and crowns by means of CAD/CAM. They are available in two levels of translucency (high translucency and low translucency) as well as a polychromatic IPS Empress CAD Multi Block.

IPS Empress CAD restorations are finally either only polished or stained and glazed, and adhesively cemented.

IPS Empress® System

DENTAL TECHNICIAN	CAD/CAM USER	DENTIST
<p>IPS Empress Esthetic</p>  <p>Ceramic restorations fabricated in the laboratory</p>	<p>IPS Empress CAD</p>  <p>Ceramic restorations chairside or labside fabricated</p>	<p>IPS Empress Direct</p>  <p>Directe composites Filling therapy</p>

IPS Empress® CAD for CEREC® Basic Kit A–D

The Basic Kit contains a selection of blocks in the most popular A–D shades, as well as the necessary processing accessories, such as spray and polishing assortment. Thus, the Basic Kit provides all the products required for the entire chairside treatment procedure. The Basic Kit is supplied in the Material Box.



Delivery form

IPS Empress® CAD for CEREC® Basic Kit A–D	602475
HT Blocks	
Shade/Size: A1 / I12, A2 / I12, A3 / I12, B1 / I12	5 each
LT Blocks	
Shade/Size: A1 / C14, A2 / C14, A3 / C14, B1 / C14 BL2 / C14	5 each
Multi Blocks	
Shade/Size: A1 / C14 L, A2 / C14 L, A3 / C14 L	5 each
IPS Contrast Spray chairside	1 x 50 ml
OpraFine Assortment	1x
OpraGate S, OpraGate R	4 each
OpraDam S, OpraDam R	4 each
Bleach BL Shade Guide	1x
IPS Empress CAD HT/LT Shade Guide	1x
Virtual CADbite	1 x 50 ml

* IPS Empress products (pages 33 – 40) can only be ordered from authorized dealers of Ivoclar Vivadent technical.

IPS Empress® CAD for CEREC® Trial Kit A-D

The Trial Kit contains a small selection of blocks in A–D shades, as well as the necessary processing accessories, such as spray, cementation materials, polishing assortment. Thus, the Trial Kit provides all the products required for the first CEREC® restorations.



Delivery form

IPS Empress® CAD for CEREC® Trial Kit A–D	602479
HT Blocks Shade/Size: A1 / I12, A2 / I12, A3 / I12, B1 / I12	1 each
LT Blocks Shade/Size: A1 / C14, A2 / C14, A3 / C14, B1 / C14 BL2 / C14	1 each
Multi Blocks Shade/Size: A1 / C14 L, A2 / C14 L, A3 / C14 L	1 each
IPS Contrast Spray chairside	1x 50 ml
Multilink Automix Syringe, transparent	9 g
Monobond Plus	5 g
Multilink-Primer A and B	3 g each
OptraFine Promo Pack	1x
OptraGate S, OptraGate R	2 each
OptraDam S, OptraDam R	2 each
IPS Empress Universal Glaze	3 g
IPS Empress Universal Glaze and Stain Liquid	1 x 15 ml
Virtual CADbite	1 x 50 ml

IPS Empress® CAD HT

The IPS Empress® CAD HT blocks exhibit a higher translucency and lower brightness value than the LT blocks. They are ideally suitable for fabricating inlays and onlays because of their exceptional chameleon effect. The high translucency of the material and its life-like fluorescence allow the restoration to blend in seamlessly with the surrounding dentition.



Delivery form

IPS Empress® CAD for CEREC® and inLab® HT		
Refill HT Blocks – Chromascop	5 each	See p. 36
(4 sizes / 3 Chromascop shades)		
Refill HT Blocks – A–D	5 each	See p. 36
(4 sizes / 9 A–D shades)		

IPS Empress® CAD LT

The IPS Empress CAD LT blocks are characterized by their high level of brightness and true-to-nature chroma. Therefore, they are particularly suitable for fabricating larger restorations. The specially adjusted brightness of the material prevents "greying" of full and partial restorations. The blocks demonstrate a natural-looking fluorescence, which matches the different indications. Therefore, the restorations seamlessly blend into the remaining dentition under different light conditions.



Delivery form

IPS Empress® CAD for CEREC® and inLab® LT		
Refill LT Blocks – Chromascop	5 each	See p. 36
(4 sizes / 3 Chromascop shades)		
Refill LT Blocks – A–D	5 each	See p. 36
(4 sizes / 9 A–D shades)		
Refill LT Blocks – Bleach	5 each	See p. 36
(3 sizes / 4 Bleach shades)		

IPS Empress® CAD Multi

The polychromatic IPS Empress® CAD Multi blocks offer a smooth colour transition between the dentin and incisal areas. They produce highly esthetic and natural-looking results, even without characterization. IPS Empress CAD Multi blocks feature a high level of chroma and lifelike opacity in the cervical areas and the desired level of translucency in the incisal region.



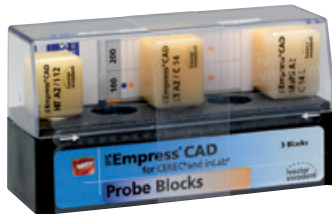
Delivery form

IPS Empress® CAD for CEREC® and inLab® Multi

Refill Multi Blocks – A–D	5 each	See p. 36
(3 sizes / 5 A–D shades)		
Refill Multi Blocks – Bleach	5 each	See p. 36
(3 sizes / 2 Bleach shades)		

IPS Empress® CAD Probe Blocks

Three IPS Empress® CAD blocks in the shade A2 (HT, LT, Multi).



Delivery form

IPS Empress® CAD for CEREC® and inLab® Probe Blocks	603417
IPS Empress CAD for CEREC and inLab HT A2 / I 12	1x
IPS Empress CAD for CEREC and inLab LT A2 / C 14	1x
IPS Empress CAD for CEREC and inLab Multi A2 / C 14 L	1x

OVERVIEW OF BLOCKS

HT High Translucency	A-D									
	LT Low Translucency									
	Multi	A1	A2	A3	A3.5	B1	B2	B3	C2	D3
I 8	● 602500	● 602501	● 602502	● 602503	● 602504	● 602505	● 602506	● 602507	● 602508	
I 10	● 602510 ● 602547	● 602511 ● 602548	● 602512 ● 602549	● 602513 ● 602550	● 602514 ● 602551	● 602515 ● 602552	● 602516 ● 602553	● 602517 ● 602554	● 602518 ● 602555	
I 12	● 602520 ● 602557 ● 602592	● 602521 ● 602558 ● 602593	● 602522 ● 602559 ● 602594	● 602523 ● 602560 ● 602595	● 602524 ● 602561 ● 602596	● 602525	● 602526 ● 602562	● 602527 ● 602563	● 602528 ● 602564	● 602529 ● 602565
C 14	● 602567 ● 602598	● 602568 ● 602599	● 602569 ● 602600	● 602570 ● 602601	● 602571 ● 602602	● 602572	● 602573	● 602574	● 602575	
C 14 L	● 602604	● 602605	● 602606	● 602607	● 602608					
HT High Translucency	Chromascop						Bleach			
	LT Low Translucency									
	Multi	100	200	300			BL1	BL2	BL3	BL4
I 8	● 602484	● 602485	● 602486							
I 10	● 602488 ● 602531	● 602489 ● 602532	● 602490 ● 602533			● 602577	● 602578	● 602579	● 602580	
I 12	● 602492 ● 602535	● 602493 ● 602536	● 602494 ● 602537			● 602582 ● 607681	● 602583	● 602584 ● 607682	● 602585	
C 14	● 602539	● 602540	● 602541			● 602587 ● 607683	● 602588	● 602589 ● 607684	● 602590	
C 14 L						● 607672		● 607673		

IPS Empress® Universal Shade/ Stains Kit

The IPS Empress® Universal Shade/Stains Kits (Chromascop and A–D) contain a selection of the most popular Dentin and Intensive Stains. These stains can be used to apply surface staining and characterization. The Kit also contains a smooth and fine-grained glazing paste for final glazing of the IPS Empress restorations.



Delivery form

IPS Empress® Universal Shade/Stains Kit 602468

IPS Empress Universal Shade Shades: 110/120, 130, 140/210, 220/230, 410/420	1 x 3 g each
IPS Empress Universal Shade Incisal Shades: I1, I2	1 x 3 g each
IPS Empress Universal Stains Shades: white, orange, mahogany, khaki, maroon	1 x 1 g each
IPS Empress Universal Glaze	3 g
IPS Empress Universal Glaze and Stain Liquid	1 x 15 ml
Tweezers, Modelling Brush 00	1x each

IPS Empress® Universal Shade/Stains Kit A–D 602469

IPS Empress Universal Shade Shades: A1, A2/A3/A3.5, B1, B2/B3/B4, C1/C2, D2/D3	1 x 3 g each
IPS Empress Universal Shade Incisal Shades: I1, I2	1 x 3 g each
IPS Empress Universal Stains Shades: white, orange, mahogany, khaki, maroon	1 x 1 g each
IPS Empress Universal Glaze	1 x 3 g
IPS Empress Universal Glaze and Stain Liquid	1 x 15 ml
Tweezers, Modelling Brush 00	1x each

IPS Empress® Universal Shades

The IPS Empress® Universal Shades are available in 15 Chromascop and 9 A–D shades. They are used for the exact reproduction of the Chromascop and A–D shades. Two IPS Empress Universal Shades Incisal are available for imitating the incisal edge.



Delivery form

IPS Empress® Universal Shade Chromascop	1 x 3 g each	
110 / 120		562457
130		562462
140 / 210		562458
220 / 230		562459
240		562463
310		562464
320		562465
330		562466
340		562467
410 / 420		562460
430 / 440		562461
510		562468
520		562469
530		562470
540		562471

IPS Empress® Universal Shade A–D	1 x 3 g each	
A1		562472
A2 / A3 / A3.5		562473
A4		562474
B1		562475
B2 / B3 / B4		562476
C1 / C2		562477
C3 / C4		562478
D2 / D3		562479
D4		562480
IPS Empress® Universal Shade Incisal	1 x 3 g each	
I1		602471
I2		602472

IPS Empress® Universal Stains

The intensive stains are available in 14 different shades. They are used to imitate natural characteristics. With the three complementary shades basic blue, basic red, and basic yellow, the shades may be individually adjusted.



Delivery form

IPS Empress® Universal Stains	1 x 1 g each	
white		562481
black		562482
mahogany		562483
khaki		562484
orange		562485
grey		562486
vanilla		562487
crackliner		562488
olive		562489
yellow		562490
basic blue		562491
basic yellow		562492
basic red		562493
maroon		562494

IPS Empress® Universal Glaze

Glaze paste to glaze all IPS Empress® CAD restorations. The liquid is used to adjust the consistency of:
IPS Empress Universal Shade,
IPS Empress Universal Stains and
IPS Empress Universal Glaze.



Delivery form

IPS Empress® Universal Glaze	1 x 3 g	562495
IPS Empress® Universal Glaze and Stain Liquid	1 x 15 ml	562496

IPS Empress® Universal Glaze Spray

For the easy and fast glazing of fully anatomical (characterized) IPS Empress® restorations (Esthetic and CAD). The Glaze Spray is also used to glaze veneered restorations (IPS Empress Esthetic Veneer).



Delivery form

IPS Empress® Universal Glaze Spray	1 x 120 ml	609432AN
------------------------------------	------------	----------

For the cut-back technique (incisal layering of IPS Empress CAD anterior crowns / veneers), the IPS Empress Esthetic layering material is available. It covers various layering materials and liquids. (See Product Catalog technical for detailed product description).

IPS Empress® Add-On 770 °C / 1418 °F

Low-fusing add-on material for subsequent adjustments, such as proximal and occlusal contacts for:

- IPS Empress® Esthetic restorations
- IPS Empress layering technique restorations



Delivery form

IPS Empress® Add-On 770 °C / 1418 °F	1 x 20 g	564080
--------------------------------------	----------	--------

IPS Empress® Esthetic Veneer Build-Up Liquid

This liquid is used to mix the IPS Empress® Esthetic Veneer layering materials IPS Empress Add-On 770 °C / 1418 °F.



Delivery form

IPS Empress® Esthetic Veneer Build-Up Liquid	1 x 60 ml	579405
--	-----------	--------

IPS Empress® CAD HT/LT A–D/BL Material Shade Guide

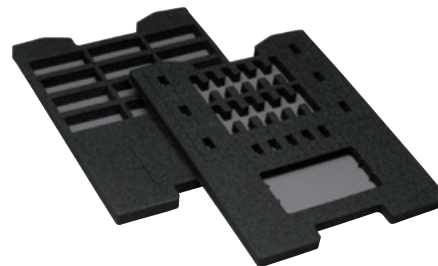
To prevent cross-contamination in the oral cavity, the individual tabs and the entire shade guide are autoclavable.
This material shade guide shows the A-D and Bleach shades in which the IPS Empress® CAD materials are available.



Delivery form

IPS Empress® CAD HT/LT A–D/BL Material Shade Guide	603418
--	--------

IPS Empress® Packaging



Delivery form

IPS Empress® Material Box small	(55 mm)	602990
---------------------------------	---------	--------

Inserts

IPS Empress CAD Block Insert	602988
IPS Empress Shade/Stain Insert	609450

* IPS e.max® CAD

IPS e.max® CAD is a high-strength lithium disilicate glass-ceramic (LS₂) for the CAD/CAM technique directly in the dental office (chairside) or the laboratory (labside).

The IPS e.max CAD blocks for chairside processing are available in 16 A-D and four modern Bleach BL shades. They are available in two levels of translucency and two sizes. There are also an even more opaque blocks for the fabrication of frameworks (layering technique) in the laboratory.

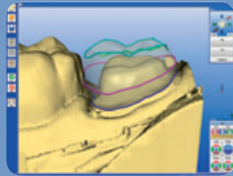
The IPS e.max CAD blocks with high translucency (HT) are used for the milling of minimally-invasive, fully anatomical restorations, such as inlays, onlays, veneers. For partial crowns and crowns, the less translucent (LT) blocks are used.

The restorations are directly milled from the blue blocks. During a quick combined crystallization/glaze firing cycle, which supersedes polishing, the restorations acquire their high strength (360 MPa) and the desired esthetic properties (tooth shade, translucency, brightness). The restorations can be additionally individualized using the Stain materials.

Finally, the restorations are seated. As an alternative to being placed using the adhesive cementation technique, crowns may also be cemented self-adhesively or conventionally.



Preparation



Construction



Milling process



Try-in



Application of Stains and/or Glaze



Crystallization



Completed restoration



Conventionally cemented IPS e.max CAD crown

* IPS e.max products (pages 39 – 49) can only be ordered from authorized dealers of Ivoclar Vivadent technical.

IPS e.max® CAD for CEREC® and inLab®

For the efficient fabrication of full-contour restorations (Monolithic Solutions) with maximum strength and toughness. The Blocks are available in A–D and Bleach shades and can be processed in the CEREC® or inLab® System from Sirona. They are optimally suitable for the monolithic fabrication of inlays, onlays, veneers, crowns and 3-unit bridges. Should esthetic characterizations be necessary, they can be achieved with the staining or cut-back technique.



Delivery form

IPS e.max® CAD for CEREC® and inLab® Basic Kit	626375
IPS e.max CAD for CEREC and inLab Blocks C14, Shades: LT A1, LT A2	2 x 5 blocks each
IPS e.max CAD for CEREC and inLab Blocks C14, Shades: HT A1, HT A2	2 x 5 blocks each
IPS e.max CAD Crystall./Shade, Shades: 1, 2, I1, I2	4 x 3 g
IPS e.max CAD Crystall./Stains, Shades: white, sunset, khaki, mahogany	4 x 1 g
IPS e.max CAD Crystall./Glaze Paste	1 x 3 g
IPS e.max CAD Crystall./Glaze Spray	1 x 120 ml (270 ml)
IPS e.max CAD Crystall./Glaze Liquid	1 x 15 ml
IPS e.max CAD Crystall./Add-On	1 x 5 g
IPS e.max CAD Crystall./Add-On Liquid	1 x 15 ml
IPS Contrast Spray Chairside blue-lemon	1 x 50 ml
Virtual CADbite	1 x 50 ml
IPS e.max CAD Crystallization Tray	1x
IPS Object Fix Flow	1 x 10 ml
IPS Object Fix Putty	1 x 10 g
Multilink Automix	1 x 5 ml
Multilink Primer A/B	1 x 3 g
Monobond Plus	1 x 5 g
IPS Ceramic Etching Gel Kit	1x
var. accessories	

IPS e.max® CAD for CEREC® and inLab®: HT I 12 and C 14 blocks

Delivery form

IPS e.max® CAD for CEREC® and inLab® HT I 12	1 x 5 blocks	
HT BL1		626423
HT BL2		626424
HT BL3		626425
HT BL4		626426
HT A1		626391
HT A2		626392
HT A3		626393
HT A3.5		626394
HT A4		626395
HT B1		626396
HT B2		626397
HT B3		626398
HT B4		626399
HT C1		626400
HT C2		626401
HT C3		626402
HT C4		626403
HT D2		626404
HT D3		626405
HT D4		626406

IPS e.max® CAD for CEREC® and inLab® HT C 14	1 x 5 blocks	
HT BL1		626427
HT BL2		626428
HT BL3		626429
HT BL4		626430
HT A1		626407
HT A2		626408
HT A3		626409
HT A3.5		626410
HT A4		626411
HT B1		626412
HT B2		626413
HT B3		626414
HT B4		626415
HT C1		626416
HT C2		626417
HT C3		626418
HT C4		626419
HT D2		626420
HT D3		626421
HT D4		626422



IPS e.max® CAD for CEREC® and inLab®: MT C 14 blocks



Delivery form

IPS e.max® CAD for CEREC® and inLab® MT C 14		1 x 5 blocks
MT BL2		680032
MT BL3		680033
MT BL4		680034
MT A1		680028
MT A2		680029
MT A3		680030
MT B1		680031

IPS e.max® CAD for CEREC® and inLab®: LT I 12 and C 14 blocks

Delivery form

IPS e.max® CAD for CEREC® and inLab® LT I 12		1 x 5 blocks
LT BL1		605338
LT BL2		605339
LT BL3		605340
LT BL4		605341
LT A1		605318
LT A2		605319
LT A3		605320
LT A3.5		605321
LT A4		626377
LT B1		605322
LT B2		605323
LT B3		605324
LT B4		626378
LT C1		626379
LT C2		605325
LT C3		626380
LT C4		626381
LT D2		626382
LT D3		605326
LT D4		626383

IPS e.max® CAD for CEREC® and inLab® LT C 14		1 x 5 blocks
LT BL1		605343
LT BL2		605344
LT BL3		605345
LT BL4		605346
LT A1		605328
LT A2		605329
LT A3		605330
LT A3.5		605331
LT A4		626384
LT B1		605332
LT B2		605333
LT B3		605334
LT B4		626385
LT C1		626386
LT C2		605335
LT C3		626387
LT C4		626388
LT D2		626389
LT D3		605336
LT D4		626390



IPS e.max® CAD for CEREC® and inLab®: C 16 and B 32 blocks

Delivery form

IPS e.max® CAD for CEREC® and inLab® LT C 16 1 x 5 blocks	
LT BL2	648221
LT A1	648188
LT A2	648189
LT A3	648190
LT A3.5	648191
LT B1	648193
LT B2	648194
LT C1	648197
LT C2	648198
LT D2	648201

IPS e.max® CAD for CEREC® and inLab® LT B 32 1 x 3 blocks	
LT BL2	648225
LT A1	648204
LT A2	648205
LT A3	648206
LT A3.5	648207
LT B1	648209
LT B2	648210
LT C1	648213
LT C2	648214
LT D2	648217



IPS e.max® CAD for CEREC® and inLab®: Impulse C 14 blocks

Delivery form

IPS e.max® CAD for CEREC® and inLab® Impulse C 14 1 x 5 blocks	
Starter Blocks	637798
Opal 1	637793
Opal 2	637794



IPS e.max® CAD for CEREC® and inLab®

Abutment Solutions: MO A 14, LT A 14 and LT A 16 blocks

They are suitable for the CAD/CAM fabrication of implant-retained hybrid restorations on single teeth. The blocks are equipped with a prefabricated interface (diameter S and L) for the Sirona Ti Base. The IPS e.max® CAD A14 Blocks in 5 MO (Medium Opacity) shades are used for highly esthetic hybrid abutments, while the IPS e.max CAD A 16 Blocks in 10 LT (Low Translucency) shades are suitable for highly efficient hybrid abutment crowns. These hybrid restorations are individually fabricated of lithium disilicate (LS₂) blocks and cemented onto the titanium base.



Delivery form

IPS e.max® CAD Abutment Solutions for CEREC® and inLab® Basic Kit 648187

IPS e.max CAD for CEREC and inLab blocks A14 (L), Shade: MO 1	1 x 5 blocks each
IPS e.max CAD for CEREC and inLab blocks A16 (L), Shades: LT A1, LT A2	5 blocks each
IPS Ceramic Etching Gel Kit	1x
Monobond Plus	1 x 5 g
Multilink Hybrid Abutment	1 x 9 g
Virtual Extra Light Body	1 x 50 ml
var. accessories	

IPS e.max® CAD for CEREC® and inLab®: MO A 14 (S) and (L) blocks

Delivery form

IPS e.max® CAD for CEREC® and inLab® MO A 14 (S)	1 x 5 blocks
MO 0	644357
MO 1	644358
MO 2	644359
MO 3	644360
MO 4	644361

IPS e.max® CAD for CEREC® and inLab® MO A 14 (L)	1 x 5 blocks
MO 0	644362
MO 1	644363
MO 2	644364
MO 3	644365
MO 4	644366



IPS e.max® CAD for CEREC® and inLab®: LT A 14 (S) and (L) blocks

Delivery form

IPS e.max® CAD for CEREC® and inLab® LT A 14 (S)	1 x 5 blocks
LT BL2	678882
LT A1	678784
LT A2	678785
LT A3	678866
LT A3.5	678867
LT B1	678868
LT B2	678869
LT C1	678870
LT C2	678871
LT D2	678872

IPS e.max® CAD for CEREC® and inLab® LT A 14 (L)	1 x 5 blocks
LT BL2	678883
LT A1	678873
LT A2	678874
LT A3	678875
LT A3.5	678876
LT B1	678877
LT B2	678878
LT C1	678879
LT C2	678880
LT D2	678881



IPS e.max® CAD for CEREC® and inLab®: LT A 16 (S) and (L) blocks

Delivery form

IPS e.max® CAD for CEREC® and inLab® LT A 16 (S)	1 x 5 blocks
LT BL2	645595
LT A1	644367
LT A2	644368
LT A3	644369
LT A3.5	644370
LT B1	644372
LT B2	644373
LT C1	644376
LT C2	644377

IPS e.max® CAD for CEREC® and inLab® LT A 16 (L)	1 x 5 blocks
LT BL2	645599
LT A1	644383
LT A2	644385
LT A3	644386
LT A3.5	644387
LT B1	644389
LT B2	644390
LT C1	644393
LT C2	644394
LT D2	644397



IPS e.max® CAD Characterization Kit

The kit comprises IPS e.max CAD Crystall./Shades, Stains and Glaze as well as the corresponding liquids. The IPS e.max CAD Crystall. materials in particular are used in chairside processes on IPS e.max CAD, IPS e.max ZirCAD and IPS Empress CAD.



Delivery form

IPS e.max® CAD Characterization Kit

688805

IPS e.max CAD Crystall. Shades: 1, 2, I1, I2	1 x 3 g each
IPS e.max CAD Crystall./Stains Shades: white, sunset, khaki, mahogany	1 x 1 g each
IPS e.max CAD Crystall./Glaze Paste Fluo	1 x 3 g
IPS e.max CAD Crystall./Glaze Spray	1 x 270 ml
IPS e.max CAD Crystall./Glaze Liquid	1 x 15 ml
IPS e.max CAD Crystall./Add-On Incisal	1 x 5 g
IPS e.max CAD Crystall./Add-On Liquid allround	1 x 15 ml
IPS e.max CAD Crystallization Tray	1 x
IPS e.max CAD Speed Crystallization Tray	1 x

IPS e.max® CAD Crystall./Shades

Dentin stains in paste form that are optimally coordinated with IPS e.max® CAD. They may be applied both on "blue" or crystallized restorations.



Delivery form

IPS e.max® CAD Crystall./Shades	1 x 3 g each	
0		605348
1		605349
2		605350
3		605351
4		605352
11		605353
12		605354

IPS e.max® CAD Crystall./Stains

Intensive stains in paste form that are optimally coordinated for use with IPS e.max® CAD. They may be applied both on "blue" or crystallized restorations.



Delivery form

IPS e.max® CAD Crystall./Stains	1 x 1 g each	
white		605356
creme		605357
sunset		605358
copper		605359
olive		605360
khaki		605361
mahogany		605362

IPS e.max® CAD Crystall./Glaze Paste

Special glaze paste to be used with fully anatomical IPS e.max CAD restorations. It may be applied either prior to crystallization on the "blue" crown or in the subsequent firing cycle.



Delivery form

IPS e.max CAD Crystall./Glaze Paste	1 x 3 g	605363
IPS e.max CAD Crystall./Glaze Paste FLUO	1 x 3 g	674676

IPS e.max® CAD Crystall./ Glaze Spray

Glaze spray to be used with fully anatomical IPS e.max® CAD restorations. It is sprayed on the restorations once IPS e.max CAD Crystall./Shades and Stains have been applied. Subsequently, the restorations are fired in a combined crystallization and glaze firing cycle.



Delivery form

IPS e.max® CAD Crystall./Glaze Spray	120 ml	605364
--------------------------------------	--------	--------

IPS e.max® CAD Crystall./ Glaze Liquid

Special liquid to dilute IPS e.max® CAD Crystall./Shades and Stains and the IPS e.max CAD Crystall./Glaze Paste.



Delivery form

IPS e.max® CAD Crystall./Glaze Liquid	1 x 15 ml	605366
---------------------------------------	-----------	--------

IPS e.max® CAD Crystall./ Add-On, Liquid

For adjustments, such as in incisal/occlusal or dentin areas. These adjustments can be made directly with the crystallization firing or in a subsequent corrective firing cycle.

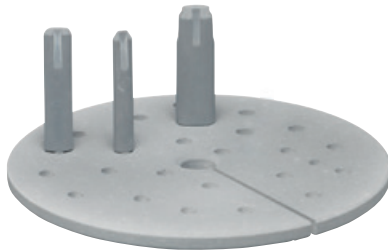


Delivery form

IPS e.max® CAD Crystall./Add-On Dentin	1 x 5 g	635549
IPS e.max® CAD Crystall./Add-On Incisal	1 x 5 g	605365
IPS e.max® CAD Crystall./Add-On Liquid allround	1 x 15 ml	605569

IPS e.max® CAD Crystallization Tray

IPS e.max CAD Crystallization Tray is a firing tray suitable for the crystallization of IPS e.max CAD restorations and IPS e.max CAD Crystall./Stains and Glaze firing of IPS e.max ZirCAD restorations.

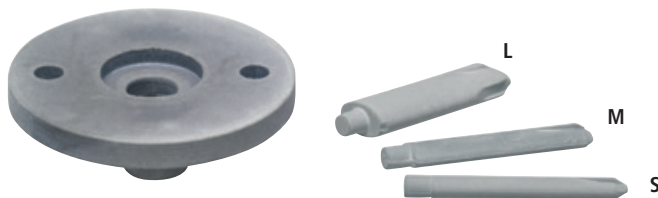


Delivery form

IPS e.max® CAD Crystallization Tray	605367AN	
IPS e.max CAD Crystallization Tray	1 x	
IPS e.max CAD Crystallization Pin (sizes: S, M, L)	9 x	

IPS e.max® CAD Speed Crystallization Tray

IPS e.max CAD Speed Crystallization Tray is a special firing tray suitable for the speed crystallization of IPS e.max CAD restorations and IPS e.max CAD Crystall./Stains and Glaze firing of IPS e.max ZirCAD restorations.

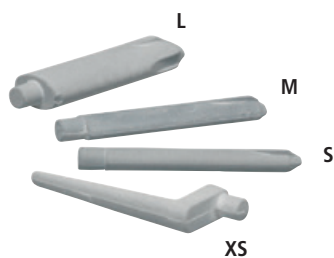


Delivery form

IPS e.max® CAD Speed Crystallization Tray	647633AN	
IPS e.max CAD Speed Crystallization Tray	1 x	
IPS e.max CAD Speed Crystallization Pin	3 x	

IPS e.max® CAD Crystallization Pins

The pins assist users in positioning the restorations on the IPS e.max CAD Crystallization or IPS e.max CAD Speed Crystallization Tray.



Delivery form

IPS e.max® CAD Crystallization Pin Refill		
S / M / L	6 x each	605368AN
XS	3 x	656105

IPS e.max® Press / IPS e.max® CAD Shade Guides

The shade guides for press and CAD materials are supporting tools for determining the shade. To prevent cross-contamination in the oral cavity, the individual tabs and the entire shade guide are auto-clavable. The shade tabs show the final shade, i.e. after pressing or crystallization. They thus help to check the shade, and they can also be used to check the quality of the crystallization process of IPS e.max® CAD restorations.



Delivery form

IPS e.max® Press/CAD LT Shade Guide	1x	605523
IPS e.max® Press/CAD HT Shade Guide	1x	613998
IPS e.max® Press/CAD MT Shade Guide	1x	680311

IPS e.max® Packaging

The IPS e.max® Material Box and the inserts are the ideal storage place in the laboratory for the various IPS e.max materials.



Delivery form

IPS e.max® Packaging

IPS e.max Material-Box small (55 mm)	1x	597483
IPS e.max Material-Box medium (80 mm)	1x	597484
IPS e.max Ceram Insert (for 22 Refills)	1x	597485
IPS e.max Ceram Shade Insert (for 16 Refills + 2 Liquids)	1x	635843
IPS e.max Ceram Essence Insert (for 21 Refills + 2 Liquids)	1x	635844
IPS e.max Press/ZirPress Insert (for 24 Refills)	1x	607668
IPS e.max CAD/ZirCAD Insert (for 6 Refills)	1x	614248

All-Ceramic Preparation Guide

The three-dimensional preparation guide from Ivoclar Vivadent visualizes the proper preparation of teeth for all-ceramic restorations. The model furthermore shows the minimum preparation requirements and the indications of IPS Empress and IPS e.max restorations. The model comes with an illustrated booklet which features the preparation recommendations. The booklet is also available separately.



Delivery form

All-Ceramic Preparation Guide Edition II (model)	630548
All-Ceramic Recommendations for Preparation (D/E)	631797

IPS e.max® ZirCAD LT for CEREC®

IPS e.max ZirCAD LT are preshaded monochromatic zirconium oxide blocks suitable for dental practices. They are indicated for full-contour crowns and three-unit bridges. The material's high strength (1,200 MPa*) allows for thin restoration walls (0.6 mm) and thus for tooth-structure preserving preparations. After wet or dry processing, sintering is conducted in e.g. Programat® CS4. The fluorescent IPS e.max CAD Crystall./Glaze Paste Fluo is available for glazing. Optional characterization is possible with IPS e.max CAD Crystall./Shades and Stains. IPS e.max ZirCAD restorations can be cemented conventionally (e.g. with SpeedCEM® Plus)

* Mean biaxial flexural strength. Source: R&D Ivoclar Vivadent, Schaan, Liechtenstein



Delivery form

IPS e.max® ZirCAD CER/inLab Starter Kit LT **686282**

IPS e.max® ZirCAD CER/inLab LT C17/5 Blocks

BL	686192
A1	686193
A2	686194
A3	686195
B1	686196

IPS e.max® ZirCAD CER/inLab LT B45/3 Blocks

BL	686200
A1	686201
A2	686202
A3	686203
B1	686204

* IPS® Ceramic Etching Gel

The IPS® Ceramic Etching Gel is used for the creation of retentive bonding surfaces on all-ceramic restorations to prepare for cementation. It enhances the bonding effect between the composite cement and the ceramic bonding surface.



Delivery form

IPS® Ceramic Etching Gel Kit		531550
IPS Ceramic Etching Gel	1 x 5 ml	
Neutralizing Powder	1 x 30 g	

Refill

IPS Ceramic Etching Gel, red	1 x 5 ml	531548
Neutralizing Powder	1 x 30 g	531549

* Tweezers

Facilitate handling during staining and glazing.



Delivery form

Tweezers	1x	554069
----------	----	--------

* IPS® Contrast Spray Chairside

IPS Contrast Spray Chairside is used to achieve optimum recordings for CAD/CAM restorations. It balances out the different optical properties of dentin and enamel and thus permits detailed representation of the edges. The IPS Contrast Spray Chairside has been especially developed for intraoral use.



Delivery form

IPS® Contrast Spray Chairside crème-lemon		
5 single-use nozzles, 2 spray heads	1 x 50 ml	633159

IPS® Contrast Spray Chairside blue-lemon		
5 single-use nozzles, 2 spray heads	1 x 50 ml	633160

Refill Cannulas	100x	614437
-----------------	------	--------

* Can only be ordered from authorized dealers of Ivoclar Vivadent technical.

* IPS® Object Fix Flow IPS® Object Putty

Auxiliary firing pastes with different levels of viscosity to support all-ceramic restorations (particularly IPS e.max CAD) during firing and crystallization. The pastes are used to stabilize and secure the restorations on the silicon nitride support pins or directly on the silicon nitride firing tray. The pastes are easy to apply and remove after the firing procedure.



Delivery form

IPS® Object Fix Flow	1 x 10 ml	605525
IPS® Object Fix Putty	1 x 10 g	605526

* IPS® Natural Die Material Kit Promo



Delivery form

IPS® Natural Die Material Kit Promo		638177
IPS Natural Die Material Kit (597078)	1x	
IPS Natural Die Material Shade Guide	1x	

* IPS® Natural Die Material Shade Guide

The shade guide enables optimum selection of the die shade after preparation.
To prevent cross-contamination in the oral cavity, the individual tabs and the entire shade guide are autoclavable.



Delivery form

IPS® Natural Die Material Shade Guide	1x	597090
---------------------------------------	----	--------

* Can only be ordered from authorized dealers of Ivoclar Vivadent technical.

Telio®

Everything (for) provisionals



Telio CS . Telio CAD . Telio LAB

Telio enables dentists (Telio CS), CAD/CAM users (Telio CAD) and dental technicians (Telio Lab) to take advantage of a comprehensive, fully integrated product system.

- One product solution for conventional and implant-borne temporary restorations.
- All materials and shades are compatible with each other
- Suitable for a vast range of applications

Telio: A system for every type of temporary restoration. See for yourself.

Telio® CS C&B

Self-curing composite material in paste form for the fabrication of temporary restorations.



Indications:

Fabrication of temporary restorations

- Crowns and bridges
- Inlays and onlays
- Core build-ups in combination with temporary posts
- Veneers

Advantages:

- High fracture strength and optimum wear period
- Accuracy of fit and tension-free results
- Protection of the dental pulp and tissues
- Easy handling due to automix double-barrel cartridge

Shades:

Bleach BL3, A1, A2, A3, A3.5

Delivery form

Telio® CS C&B Starter Kit A2 628244

Telio CS C&B A2	1 x 78 g
Mixing Tips	10 x
Telio CS Link Transparent	1 x 6 g
Mixing Tips	4 x
Telio CS Desensitizer	1 x 5 g
Application Brushes	50 x
var. accessories	

Refill Telio® CS C&B 1 x 78 g

Double-barrel cartridge, 10:1, var. accessories

Bleach BL3	628249
A1	628245
A2	628246
A3	628247
A3.5	628248

Refill Dispenser	1x	561381
------------------	----	--------

Refill Mixing Tips	50x	628157
--------------------	-----	--------

Telio® CS Link

Dual-curing, translucent, temporary composite cement for the esthetic and provisional cementation of temporary restorations.



Indications:

Temporary cementation of provisionals

- Crowns and bridges
- Inlays and onlays
- Veneers

Advantages:

- Eugenol-free
- Dual-curing
- High esthetics due to two translucent shades
- Ideal retention behaviour
- Easy handling due to automix double-push syringe

Shades:

A3 and Transparent

Delivery form

Telio® CS C&B Starter Kit A2		628244
Telio CS C&B A2	1 x 78 g	
Mixing Tips	10 x	
Telio CS Link Transparent	1 x 6 g	
Mixing Tips	4 x	
Telio CS Desensitizer	1 x 5 g	
Application Brushes	50 x	
var. accessories		
Refill Telio® CS Link	2 x 6 g	
Double-push syringe, 1:1, var. accessories		
A3		627912
Transparent		627914
Refill Mixing Tips	15x	645951

Telio® CS Cem Implant

Self-curing resin cement with light-curing option designed for the esthetic, reversible/semi-permanent cementation of restorations on implant abutments.



Indication:

- Reversible/semi-permanent cementation of implant superstructures on abutments made of titanium, gold and zirconium oxide.

Advantages:

- Reversible/semi-permanent cementation of temporary and permanent restorations
- Wear period: 6 months and more

Delivery form

Refill Telio® CS Cem Implant	1 x 6 g	
Transparent		637510
Opaque		637509
Refill Mixing Tips	15x	645951

Telio® CS Desensitizer

A clear solution for application onto dentin for reducing and preventing dentinal hypersensitivity and post-operative sensitivity.



Indications:

- Prevention and reduction of dentinal hypersensitivity and post-operative sensitivity for the following fields of application:
- Temporary restorations
 - Luting / cementation of indirect restorations
 - Direct restorative treatment

Advantages:

- Total working time of 10 seconds. No light-curing required
- License for treatment planning and material selection. No interaction with the materials used in the further treatment steps.
- Reduction of dentinal hypersensitivity and post-operative sensitivities
- Cleaning of cut dentin surfaces

Delivery form

Telio® CS C&B Starter Kit A2 628244

Telio CS C&B A2	1 x 78 g
Mixing Tips	10 x
Telio CS Link Transparent	1 x 6 g
Mixing Tips	4 x
Telio CS Desensitizer	1 x 5 g
Application Brushes	50 x
var. accessories	

Refill Telio® CS Desensitizer

Refill Telio CS Desensitizer Bottle	1 x 5 g	627911
Refill Telio CS Desensitizer Single Dose	50 x 0.1 g	627916

Telio® CS Inlay

Telio® CS Inlay is a light-curing, single-component temporary restorative material.



Indications:

- Deep inlay preparations with parallel walls
- Reversible obturation of screw access holes in implant superstructures
- Relining of prefabricated temporary crowns made of polycarbonate or methacrylate

Advantages:

- Seals tooth cavities effectively and shows no discoloration
- Demonstrates low polymerization shrinkage
- Quick and easy application, removal in one piece
- Light-curing, single-component material
- Bonds to the tooth but does not stick to the instrument
- No additional temporary cement or adhesive required
- Available in two different shades and presentations (syringes and Cavifils)

Shades:

Transparent and Universal

Telio® CS Onlay

Telio® CS Onlay is a light-curing, single-component temporary restorative material.



Indications:

- Wide, shallow cavities with few retentive areas, such as onlay preparations

Advantages:

- Seals tooth cavities effectively and shows no discoloration
- Demonstrates low polymerization shrinkage
- Quick and easy application, removal in one piece
- Light-curing, single-component material
- Bonds to the tooth but does not stick to the instrument
- No additional temporary cement or adhesive required
- Available in two different shades and presentations (syringes and Cavifils)

Shades:

Transparent and Universal

Delivery form

Refill Telio® CS Inlay Syringe	3 x 2.5 g	
Universal		635332
Transparent		635335

Refill Telio® CS Inlay Cavifil	30 x 0.25 g	
Universal		635333
Transparent		635334

Refill Telio® CS Onlay Syringe	3 x 2.5 g	
Universal		635339
Transparent		635338

Refill Telio® CS Onlay Cavifil	30 x 0.25 g	
Universal		635337
Transparent		635336

Telio® CAD for CEREC® Starter Kit

The Telio® CAD Starter Kit contains blocks, cementation material, a desensitizer and additional accessories for chairside application with the CEREC® system.



Delivery form

Telio® CAD for CEREC® Starter Kit A2		631697
Telio CAD for CEREC and inLab Blocks, B40 L		
Shades: LT A1	2x	
Telio CAD for CEREC and inLab Blocks, B40 L		
Shades: LT A2, LT A3	3x each	
Telio CS Link Transparent	1 x 6 g	
Telio CS Desensitizer	1 x 5 g	
OptraPol Test Pack		
var. accessories		

Telio® CAD for CEREC® and inLab® LT / B 40 L Blocks



Delivery form

Telio® CAD for CEREC® and inLab® LT B 40 L		1 x 3 blocks	
LT BL3			627718
LT A1			627719
LT A2			627720
LT A3			627721
LT A3.5			627722
LT B1			627723
Telio® CAD for CEREC® and inLab® LT B 40 L		1 x 9 blocks	
LT BL3			627726
LT A1			627727
LT A2			627728
LT A3			627729
LT A3.5			627730
LT B1			627731

Telio® CAD for CEREC® and inLab® LT / B 55 Blocks



Delivery form

Telio® CAD for CEREC® and inLab® LT B 55		1 x 1 block	
LT BL3			627818
LT A1			627819
LT A2			627820
LT A3			627821
LT A3.5			627822
LT B1			627823
Telio® CAD for CEREC® and inLab® LT B 55		1 x 3 blocks	
LT BL3			627824
LT A1			627825
LT A2			627826
LT A3			627827
LT A3.5			627828
LT B1			627829

Luting materials

Variolink® Esthetic | Multilink® Automix | SpeedCEM® Plus




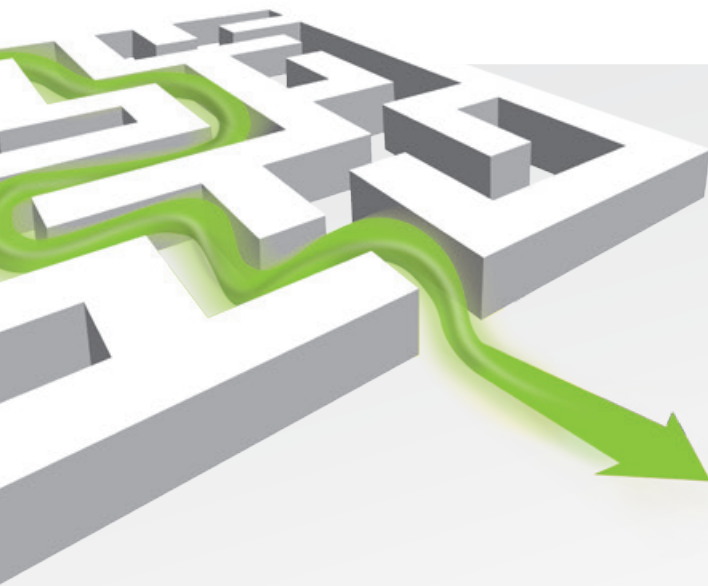
The right cement
for every clinical situation

Strong combinations

Cement	Esthetic Luting Composite		Universal Luting Composite System	Self-adhesive Resin Cement
	Variolink® Esthetic		Multilink® Automix	SpeedCEM® Plus
Curing Mode	Light-cure	Dual-cure	Self-cure with light-curing option	Self-cure with light-curing option
Cementation Method	Adhesive: Adhese® Universal	Adhesive: Adhese® Universal	Adhesive: Multilink® Primer A/B self-etching	Self-Adhesive
Glass-Ceramics e.g. IPS Empress®				
Inlays/Onlays/ Partial Crowns	✓	✓	✓	
Veneers	✓	✓		
Crowns		✓	✓	
Lithium-Disilicate (LS₂) e.g. IPS e.max®				
Occlusal Veneers	✓	✓		
Thin Veneers/Veneers	✓	✓		
Inlays/Onlays/ Partial Crowns	✓	✓	✓	
Crowns		✓	✓	
3-Unit Bridges		✓	✓	✓*
Oxide-Ceramics (Zirconia /Alumina) e.g. IPS e.max® ZirCAD				
Crowns/Bridges			✓	✓
Endodontic Posts			✓	✓
Indirect Composites e.g. SR Nexco®				
Inlays/Onlays	✓	✓	✓	
Crowns		✓	✓	
Endodontic Posts			✓	✓
Metal / Metal-Based				
Inlays/Onlays/ Partial Crowns			✓	✓
Crowns/Bridges			✓	✓
Endodontic Posts			✓	✓
Maryland Bridges			✓	✓

✓ Recommended product combination
* Crowns with a material thickness of >1.5 mm only

 Please take note of the corresponding Instructions for Use.



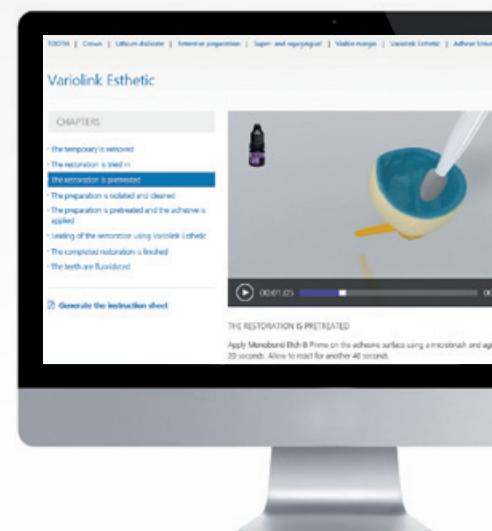
CEMENTATION NAVIGATION SYSTEM

Finding your way out of the cements maze

The Cementation Navigation System, the popular multimedia application, offers dentists practical orientation and guidance in the selection of the best luting material for each case.

www.cementation-navigation.com

- DETAILED 3D ANIMATION
- STEP-BY-STEP INSTRUCTIONS
- EASY OPERATION



Variolink® Esthetic

The esthetic luting composite

**“Amazingly simple
esthetics!”**

*The luting composite for exceptional esthetics
and user-friendly processing...*

- Balanced and concise Effect shade system
- Excellent shade stability due to amine-free composition
- Easy, controlled excess removal

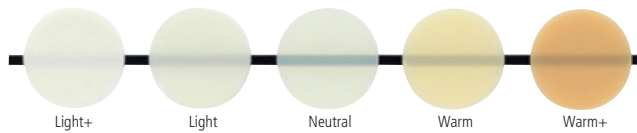
Recommended for
IPS e.max®
CAD/Press



ivoclar
vivadent®
passion vision innovation

Variolink® Esthetic

Variolink® Esthetic is an esthetic light- and dual-curing luting composite for the permanent cementation of demanding ceramic and composite restorations.



Indications:

Variolink Esthetic LC

- Permanent adhesive luting of glass-ceramic, lithium disilicate glass-ceramic and composite restorations (inlays, onlays and veneers).
- Only use Variolink Esthetic LC for restorations with a low thickness of <2 mm that have sufficient translucency (e.g. IPS e.max® HT).

Variolink Esthetic DC

- Permanent adhesive luting of glass-ceramic, lithium disilicate glass-ceramic and composite restorations (inlays, onlays, partial crowns, crowns, bridges)
- Restorations made of opaque ceramics, e.g. oxide ceramics can only be permanently cemented if an adhesive is additionally used that is separately light-cured.

Advantages:

- Straightforward Effect shade system
- Excellent shade stability thanks to the amine-free formulation
- Easy excess removal
- Flexible, situational consistency – ideal combination of flowability and stability
- Ideal bonding with Adhese® Universal
- Reliable bonding to the restoration with Monobond® Plus

Shades:

Light+, Light, Neutral, Warm, Warm+

Delivery form

Variolink® Esthetic LC System Kit (Pen) 666433WW

Variolink Esthetic LC in 3 shades	3 x 2 g
Variolink Esthetic Try-In-Paste in 3 shades	3 x 1.7 g
Total Etch	1 x 2 g
Adhese Universal VivaPen	1 x 2 ml
Monobond Plus	1 x 5 g
Liquid Strip	1 x 2.5 g
VivaPen brush cannulas	30x
VivaPen protective sleeves	20x
Variolink application tips	20x
Brush holder	1x
Brushes, soft	50x
var. accessories	

Variolink® Esthetic LC System Kit 666065WW

Variolink Esthetic LC in 3 shades	3 x 2 g
Variolink Esthetic Try-In-Paste in 3 shades	3 x 1.7 g
Total Etch	1 x 2 g
Adhese Universal	1 x 5 g
Monobond Plus	1 x 5 g
Liquid Strip	1 x 2.5 g
Vivadent applicators	50x
Variolink application tips	20x
Brush holder	1x
Brushes, soft	50x
var. accessories	

Variolink® Esthetic DC System Kit (Pen) 666434WW

Variolink Esthetic DC in 3 shades	3 x 5 g
Variolink Esthetic Try-In-Paste in 3 shades	3 x 1.7 g
Total Etch	1 x 2 g
Adhese Universal VivaPen	1 x 2 ml
Monobond Plus	1 x 5 g
Liquid Strip	1 x 2.5 g
VivaPen brush cannulas	30x
VivaPen brush cannulas	20x
Mixing tips	30x
VivaPen brush cannulas	5x
Brush holder	1x
Brushes, soft	50x
var. accessories	

Variolink® Esthetic DC System Kit 666125WW

Variolink Esthetic DC in 3 shades	3 x 5 g
Variolink Esthetic Try-In-Paste in 3 shades	3 x 1.7 g
Total Etch	1 x 2 g
Adhese Universal	1 x 5 g
Monobond Plus	1 x 5 g
Liquid Strip	1 x 2.5 g
Vivadent applicators	50x
Mixing tips	30x
Variolink application tips	5x
Brush holder	1x
Brushes, soft	50x
var. accessories	

Variolink® Esthetic LC System Kit for IPS e.max & IPS Empress 681493WW

Variolink Esthetic LC in 3 shades	3 x 2 g
Variolink Esthetic Try-In-Paste in 3 shades	3 x 1.7 g
Total Etch	1 x 2 g
Adhese Universal VivaPen	1 x 2 ml
Monobond Etch & Prime	1 x 5 g
Liquid Strip	1 x 2.5 g
VivaPen brush cannulas	30x
VivaPen brush cannulas	20x
Variolink application tips	20x
Vivadent applicators	50x
var. accessories	

Variolink® Esthetic DC System Kit for IPS e.max & IPS Empress 681492WW

Variolink Esthetic DC in 3 shades	3 x 5 g
Variolink Esthetic Try-In-Paste in 3 shades	3 x 1.7 g
Total Etch	1 x 2 g
Adhese Universal VivaPen	1 x 2 ml
Monobond Etch & Prime	1 x 5 g
Liquid Strip	1 x 2.5 g

VivaPen brush cannulas	30x
VivaPen protective sleeves	20x
Mixing tips	30x
Variolink application tips	20x
Vivadent applicators	50x
var. accessories	

Variolink® Esthetic DC Starter Kit 687593WW

Variolink Esthetic DC neutral	1 x 2,5 g
Variolink Esthetic Try-In-Paste	1 x 1,7 g
Adhese Universal VivaPen	1 x 0,5 ml
Monobond Plus	1 x 1 g
Liquid Strip	1 x 2,5 g
Variolink application tips	5x
VivaPen brush cannulas	10x
VivaPen protective sleeves	20x
Mixing tips	4x
var. accessories	

Variolink® Esthetic DC Starter Kit for IPS e.max & IPS Empress 687592WW

Variolink Esthetic DC neutral	1 x 2,5 g
Variolink Esthetic Try-In-Paste	1 x 1,7 g
Adhese Universal VivaPen	1 x 0,5 ml
Monobond Plus	1 x 1 g
Liquid Strip	1 x 2,5 g
Variolink application tips	5x
VivaPen brush cannulas	10x
VivaPen protective sleeves	20x
Mixing tips	4x
var. accessories	

Variolink® Esthetic LC Refill

Variolink Esthetic LC	1 x 2 g
Application tips	5x
Light+	666126WW
Light	666127WW
Neutral	666128WW
Warm	666129WW
Warm+	666130WW

Variolink® Esthetic DC Refill

Variolink Esthetic DC	1 x 5 g
Application tips	10x
Light+	666117WW
Light	666118WW
Neutral	666119WW
Warm	666120WW
Warm+	666121WW

Variolink® Esthetic DC Refill

Variolink Esthetic DC	1 x 9 g
Application tips	15x
Light	666122WW
Neutral	666123WW
Warm	666124WW

Variolink® Esthetic Try-In-Paste Refill

Variolink Esthetic Try-In-Paste	1 x 1.7 g
Application tips	5x
Light+	666067WW
Light	666113WW
Neutral	666114WW
Warm	666115WW
Warm+	666116WW

Mixing Tips Refill 15x 645951

Variolink® Application Tips Refill 20x 559224

Multilink® Automix

The adhesive cementation system

A strong
bond,
proven performance.



Now with advanced formula

Strong hold – both dual and self-curing

Universal – suitable for silicate and oxide ceramics as well as metal

Clinically proven – numerous long-term studies

New – additional shade, improved handling

Clinically proven with
IPS e.max®

ivoclar
vivadent
passion vision innovation

Multilink® Automix

Multilink Automix is an adhesive luting system for the cementation of indirect restorations made of silicate and oxide ceramics (e.g. IPS e.max®), metal, metal-ceramics as well as composites.

New: Optimized formula, additional “white” shade, try-in pastes and optimized handling



Indications:

Cementation of indirect restorations (inlays, onlays, crowns, bridges, endodontic posts) made of:

- Metal and metal-ceramics (PFM)
- All-ceramics (silicate)
- Reinforced all-ceramics (zirconium and aluminium oxide)
- Composites and fibre-reinforced composites (FRC)

Advantages:

- Strong hold – dual- as well as self-curing
- Universal – cementation of silicate and oxide ceramics as well as metal
- Clinically proven – many long-term studies
- Optimum removal of excess material
- Optimum esthetics
- Optimum marginal quality

Shades:

Transparent, yellow, white, opaque

Delivery form

System Pack

Multilink Automix Syringe	1 x 9 g	
Mixing Tips	15 x	
Root Canal Tips	5 x	
Multilink Primer A+B	2 x 3 g	
Monobond Plus	1 x 5 g	
Liquid Strip	1 x 2.5 g	
Application Tips for Liquid Strip	5 x	
Applicators (large and small)	25 x each	
Mixing Pad	1 x	
Mixing Plate (for Multilink Primer A+B)	1 x	
var. accessories		
Transparent		627471
Yellow		627473
Opaque		627472
White		645954

Starter Pack

Multilink Automix Syringe	1 x 2.5 g	
Mixing Tips	4 x	
Multilink Primer A/B	2 x 1 g	
Monobond Plus	1 x 1 g	
Applicators (large and small)	25x each	
Mixing Pad	1x	
Mixing Plate (for Multilink Primer A/B)	1x	
Transparent		627571

Refill Multilink® Automix

Multilink Automix Syringe	1 x 9 g	
Mixing Tips	15x	
var. accessories		
Transparent		615216
Yellow		615217
Opaque		615218
White		645952

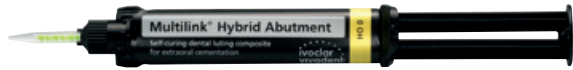
Refill Multilink® Automix Try-In

Multilink Automix Try-In Syringe	1 x 1.7 g	
Transparent		645956
Yellow		645957
Opaque		645958
White		645959

Refill Multilink® Primer A+B	2 x 3 g	576825
Refill Multilink® Primer A	1 x 3 g	613626
Refill Multilink® Primer B	1 x 3 g	613627
Refill Monobond® Plus	1 x 5 g	626221
Refill Liquid Strip	1 x 2.5 g	532505
Refill Mixing Tips	15x	645951
Root Canal Tips (Intra Canal and Mixing Tips)	5 x each	645955
Application Tips for Liquid Strip	20 x	533666
Refill Applicators (25 large, 25 small)	2x 25	592435

Multilink® Hybrid Abutment

Multilink® Hybrid Abutment is a self-curing luting composite for the permanent cementation of lithium disilicate (LS₂) glass-ceramic and zirconium oxide ceramic structures on implant sleeves made of titanium/titanium alloy and zirconium oxide.



Indication:

Extraoral cementation of lithium disilicate (LS₂) glass-ceramic and zirconium oxide ceramic structures (abutment and abutment crowns) on implant sleeves made of titanium/titanium alloy and zirconium oxide.

Advantages:

- High bonding strength for a reliable cementation
- Two levels of opacity for optimum esthetics
- Easy handling with the practical Automix syringe

Shades:

HO 0, MO 0

Delivery form

Multilink® Hybrid Abutment Starter Kit

662810

Multilink Hybrid Abutment Syringe HO 0	1 x 2.5 g
Mixing Tips	4 x
Monobond Plus	1 x 1 g
Mixing Pad	1x
var. accessories	

IPS e.max® Abutment Solutions Cem Kit

638959

Multilink Hybrid Abutment Syringe HO 0	1 x 9 g
Mixing Tips	15 x
Virtual Extra Light Body fast	1 x 50 ml
Mixing Tips	48x
Intra Oral Tips	100x
Monobond Plus	1 x 5 g
Liquid Strip	1 x 2.5 g
var. accessories	

Refill

Multilink Hybrid Abutment Syringe	1 x 9 g	
Mixing Tips	15x	
var. accessories		
HO 0		647182
MO 0		647183

Refill Mixing Tips

15x 645951

NEW

SpeedCEM[®] Plus

Self-adhesive resin cement



A BIG PLUS FOR ZIRCONIA

THE PLUS FACTORS:

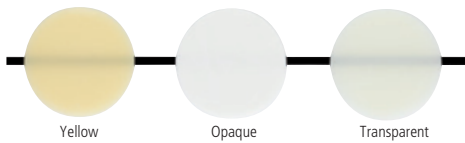
- + **Excellent self-cure performance** ideal for zirconia and metal-ceramics
- + **User-friendly** handling and easy clean-up
- + **Efficient process** with just one component



ivoclar
vivadent[®]
passion vision innovation

SpeedCEM® Plus

SpeedCEM® Plus is a self-adhesive, self-curing resin cement with optional light-curing. The material offers an ideal combination of performance and user-friendliness. Its formulation has been optimized to make it particularly suitable for use in conjunction with restorations made of zirconium oxide and metal-ceramics and for the cementation of restorations on implant abutments.



SpeedCEM Plus is suited for the permanent seating of crowns and bridges on natural teeth and on implant abutments that are made of the following restorative materials:

- Oxide ceramics such as zirconium oxide, e.g. IPS e.max® ZirCAD
- Metal and metal-based restorations
- Lithium disilicate glass-ceramics, e.g. IPS e.max®

Advantages:

- Excellent self-cure performance
- User-friendly handling
- Easy clean-up
- Tolerant processing
- High radiopacity
- Efficient process

Shades:

Transparent, Yellow, Opaque

Delivery form

Refills

SpeedCEM Plus Automix syringe	1 x 9 g	
Mixing tips	15x	
Root Canal Tips	5x	
Yellow		681710
Opaque		681711
Transparent		681712

Starter Pack

SpeedCEM Plus Automix syringe	1 x 2.5 g	
Ivoclean	1 g	
Mixing tips	4x	
Transparent		681713

System Kit

SpeedCEM Plus Automix syringe	1 x 9 g	
Ivoclean	5 g	
Mixing tips	15x	
Transparent		681714

Refill Mixing tips	15x	645951
Root Canal Tips	5x	645955

Vivaglass® CEM PL

Self-curing glass ionomer cement with high translucency.



Indications:

- Cementation of full-cast crowns or veneers, high-strength all-ceramic materials and orthodontic bands.

Advantages:

- High translucency
- 1:1 mixing ratio
- Convenient tube
- Radiopacity
- Strong bond to dentin
- Optimum wetting of powder and liquid
- Easy removal of excess material

Shade:

Universal

Delivery form

Assortment	1 x 30 g / 10 ml	562256
Powder, Liquid, var. accessories		
Refill	1 x 10 ml	638995

Monobond Etch & Prime®

Monobond Etch & Prime® is a single-component ceramic primer that allows **glass-ceramic surfaces** to be etched and silanated in one easy step.



Indications:

- Conditioning of glass-ceramic surfaces for the adhesive bond with luting composites

Advantages:

- Eliminates the unpopular etching of the glass-ceramic surface with hydrofluoric acid
- The glass-ceramic is etched and conditioned in one step
- A reliable bond to the adhesive is established

Delivery form

Monobond Etch & Prime Refill	1 x 5 g	673026WW
------------------------------	---------	----------

Monobond® Plus

Universal, single-component bonding agent for **all** indirect restorative materials.



Indications:

Universal, single-component bonding agent for all indirect restorative materials (glass and oxide ceramics, metal, composite, fibre-reinforced composite). It generates a sound bond between the restoration and the cementation material.

Delivery form

Refill	1 x 5 g	626221
--------	---------	--------

Ivoclean®

Universal cleaning paste especially designed for removing contaminants, in particular those containing proteins, from restoration surfaces after intraoral try-in.



Indication:

- Extraoral cleaning of pre-treated ceramic and metal restoration surfaces

Delivery form

Refill	1 x 5 g	637568
--------	---------	--------

Liquid Strip

Glycerine gel to prevent the oxygen-inhibited layer of composites with composite or ceramic restorations.



Indications:

- Try-in paste
- Preventing an inhibited layer with composites
- Protecting the etching pattern of lab-fabricated all-ceramic restorations

Delivery form

Refill	1 x 2.5 g	532505
--------	-----------	--------

Heliosit® Orthodontic

Light-curing, highly transparent single-component luting material for brackets.



Advantages:

- No dosing, no mixing
- Brackets can be placed on the tooth surfaces without time pressure due to the light-curing properties of the material

Delivery form

Refill	3 x 2.5 g	532629
--------	-----------	--------

Ceramic Repair

Comprehensive system for intraoral repairs of ceramic and composite restorations.



Indications:

Repair of fractures in:

- Ceramic-veneered restorations
- All-ceramic restorations
- Composite restorations

Advantages:

- Comprehensive system
- Clinically proven materials
- Well-structured processing procedure

Delivery form

Intro Pack

628838

Tetric EvoCeram (A1, A2, A3, A3.5 Dentin)	4 x 3 g
IPS Empress Direct Opaque	1 x 1.8 g
Monobond Plus	1 x 5 g
Heliobond	1 x 6 g
var. accessories	

ApexCal®

ApexCal® is the new, creamy calcium hydroxide paste suitable for use as a temporary disinfectant dressing during endodontic treatment.



Direct application of ApexCal with a tip

Application of ApexCal with a lentulo spiral

Rinsing out of the temporary ApexCal dressing

Indications:

- Applied as a drug filler during root canal treatment and used for indirect and direct pulp capping

Advantages:

- Time-saving direct application
- Easy removal, as the material does not set when in place
- High radiopacity (400% Al)

Delivery form

Refill		595915
Syringes ApexCal	2 x 2.5 g	
Cannulas	15x	
Refill Cannulas	15x	596608

Apexit® Plus

Calcium hydroxide root canal sealer for the permanent obturation of root canals.



Initial situation

Direct application of Apexit Plus using an Intra Canal Tip

Application of Apexit Plus using a lentulo spiral



Insertion of the gutta percha points

Condensation of the gutta percha points using a spreader

Obturated root canal

Indications:

- Permanent obturation of root canals in conjunction with all obturation techniques involving gutta-percha

Advantages:

- Excellent tissue tolerance
- Durable sealing of the root canal due to the slight setting expansion
- Its easy flowing composition allows the material to adapt well even to morphologically complicated canals
- Convenient application (automix syringe and Intra Canal Tip enable easy direct application)
- Long working time (mixed Apexit Plus can be used over 3 hours at room temperature)

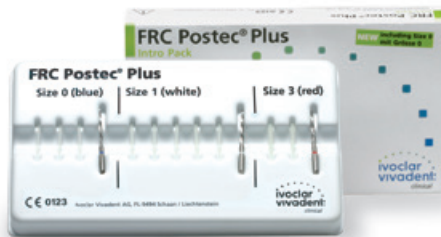
Delivery form

Refill		593991
Double-push Syringes	2 x 6 g	
Mixing Tips	15x	
Intra Canal Tips	5x	
Refill Mixing Tips	15x	595132
Refill Intra Canal Tips	15x	597380

FRC Postec® Plus

FRC Postec® Plus is a highly esthetic and highly radiopaque root canal post composed of glass fibre-reinforced composite. The post is suitable for the chairside reconstruction of endodontically treated teeth that show extensive coronal damage.

The FRC Postec Plus system consists of light-transmitting glass fibre-reinforced composite posts in three sizes and includes purpose-designed stainless steel reamers for the preparation of the recipient site of the post space.



Prepare the post space



Cement the post with Multilink



Build up the core with MultiCore Flow



Completed core build-up

Indications:

- Restoration of endodontically treated anterior and posterior teeth that demonstrate severe coronal damage

Advantages:

- Lifelike appearance
- Superior radiopacity
- High retention
- Gentle on roots
- Clearly arranged system using tried-and-tested products
- Easy to remove
- Clinically proven concept

Delivery form

Intro Pack Size 0/1/3		603543
FRC Postec Plus Size 0	3x	
FRC Postec Plus Size 1	5x	
FRC Postec Plus Size 3	2x	
FRC Postec Plus Reamer Size 0	1x	
FRC Postec Plus Reamer Size 1	1x	
FRC Postec Plus Reamer Size 3	1x	
Refill Size 0	20x	603540
Refill Size 0	5x	603541
Refill Size 1	20x	590222
Refill Size 1	5x	583244
Refill Size 3	20x	590223
Refill Size 3	5x	583245
Refill Reamer, Size 0	1x	603542
Refill Reamer, Size 1	1x	572801
Refill Reamer, Size 3	1x	572800

MultiCore® Flow

Self-curing composite core build-up material with light curing option. Two curing methods and four shades provide an optimum foundation for the reconstruction of vital and non-vital teeth with part or most of the clinical crown missing.



Automix syringe, 10 g



Cartridge, 50 g

Indications:

- Core build-up of vital and non-vital teeth

Advantages:

- Based on Ivoclar Vivadent's long-term experience in the field of composite technology
- A suitable option for every case: Self- or light-curing
- Four different shades
- Coordinated system with the self-etching AdheSE

Shades:

Light, medium, blue and white

Delivery form

MultiCore® Flow

Refill	1 x 10 g	
Automix Syringe, var. accessories		
Light		604166
Medium		604167
White		604168
Mixing Tips small	10x	683287
Intra Oral Tips small	10x	604210
Root Canal Tips	5x	603018
Refill	1 x 50 g	
Base, Catalyst, var. accessories		
Light		578913
Medium		578914
Blue		578915
Dispenser	1x	579094
Mixing Tips	50x	579096
Intra Oral Tips	50x	579095

Virtual®

Virtual® is the new line of vinylpolysiloxane impression materials specifically developed to meet the requirements of today's most popular impression taking techniques.

The system features the five viscosities Putty, Heavy Body, Monophase, Light Body and Extra Light Body in both "fast" (2:30 min.) and "regular" (4:30 min.) setting times.

The system is complemented by a full line of accessories, including a tray adhesive.



Indications:

- Final impressions used for the fabrication of indirect restorations (crowns, bridges, inlays, onlays and veneers)
- Dental implant impressions
- Matrix for "wax-ups" and treatment planning, study models
- Edentulous impressions
- Matrix used to create temporary restorations

Advantages:

- Excellent adaptation to the moist oral hard and soft tissues
- Excellent moisture displacement
- Exceptional readability and precision
- Flexible working times and fast setting phase
- Fresh peppermint scent
- Outstanding balance of physical properties

Shades:

- Sea blue: Virtual Putty, Virtual Heavy Body and Virtual Monophase
 Caramel: Virtual Light Body and Virtual Extra Light Body

Delivery form

Multi Pack	12 x 50 ml + Mixing Tips	
Extra Light Body Fast		572812
Extra Light Body Regular		572813
Light Body Fast		572826
Light Body Regular		572827
Monophase Fast		572828
Monophase Regular		572829
Heavy Body Fast		572830
Heavy Body Regular		572831

Refill	2 x 50 ml + 12 Mixing Tips	
Extra Light Body Regular		562827
Extra Light Body Fast		562828
Light Body Regular		562829
Light Body Fast		562830

Refill	2 x 50 ml + 6 Mixing Tips	
Monophase Regular		562831
Monophase Fast		562832
Heavy Body Regular		562835
Heavy Body Fast		562836

Refill		
Putty Regular	2 x 300 ml	562839
Putty Fast	2 x 300 ml	562840

Accessories		
Tray Adhesive	1 x 10ml	562841
Refill Mixing Tips, small	48x	572806
Refill Mixing Tips, large	48x	572807
Refill Intra Oral Tips, large	100x	572808
Refill Intra Oral Tips, small	100x	572809
Refill Dispenser 1:1	1x	572810

Virtual® 380

The two consistencies Heavy Body and Monophase are now offered as Virtual® 380 in new, large cartridges. These XXL cartridges are suitable for use in e.g. Pentamix, Plug & Press Dispenser and MixStar mixing units.



Advantages:

- Ready-to-use, large cartridge - convenient handling
- Separate activation as in the case of foil bags is not required
- Economical package size - contents 380ml

Delivery form

Multi Pack		6 x 380 ml each + Mixer + Bayonet Ring
Monophase Fast		594835
Heavy Body Fast		594836
Heavy Body Regular		594837
Refill		2 x 380 ml each + Mixer + Bayonet Ring
Monophase Fast		594838
Heavy Body Fast		594839
Heavy Body Regular		594840
Accessories		
Refill Dynamic Mixer	50x	600158

Technical Data	Extra Light Body	Light Body	Monophase		Heavy Body		Putty
Colour	Caramel	Caramel	Sea blue		Sea blue		Sea blue
Contents	50 ml	50 ml	50 ml	380 ml	50 ml	380 ml	2 x 300 ml
Working time							
Fast	1:00 min.	1:00 min.	1:00 min.	1:00 min.	1:00 min.	1:00 min.	1:00 min.
Regular	1:30 min.	1:30 min.	1:30 min.	–	1:30 min.	1:30 min.	1:30 min.
Time in mouth							
Fast	2:30 min.	2:30 min.	2:30 min.	3:30 min.	2:30 min.	2:30 min.	2:30 min.
Regular	4:30 min.	4:30 min.	4:30 min.	–	4:30 min.	4:30 min.	4:30 min.
Linear dimensional change 24 h	≤ 1.50 %	≤ 1.50 %	≤ 1.50 %		≤ 1.50 %		≤ 1.50 %
Strain in compression (min.–max.)	2–8 %	2–8 %	2–8 %		0.8–5 %		0.8–5 %
Recovery from deformation	≥ 96.5 %	≥ 96.5 %	≥ 96.5 %		≥ 96.5 %		≥ 96.5 %
Detail reproduction	20 μ	20 μ	20 μ		50 μ		75 μ
Shore-A hardness	43–51	50–57	64–71		66–76		58–64

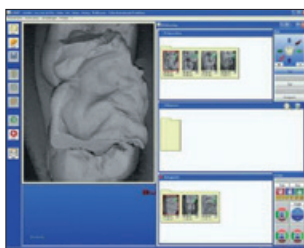


Virtual® CADbite Registration

Virtual® CADbite registration material is scannable and can be used for the optical recording of data when fabricating restorations with CAD/CAM systems such as CEREC. Virtual CADbite is an addition silicone, which may also be used for „conventional“ bite registration techniques in conjunction with indirect restorative procedures. The material demonstrates a non-slump consistency, short setting time and good dimensional stability. Moreover, it provides excellent reproduction of detail and achieves a final hardness of 32 Shore D.



Bite registration with Virtual CADbite in situ



Scanned bite record

Advantages:

Fast

As the material requires an intra-oral set time of only 45 seconds, the risk of distortions and inaccuracies due to patient jaw movements are substantially reduced. At the same time, Virtual CADbite provides sufficient working time to allow full-arch bite registrations to be taken.

Strong

Due to the material's high final hardness of 32 Shore-D and high fracture toughness, Virtual CADbite registrations are easy to trim and grind. Moreover, undesirable shifts are prevented when adjusting the position of the casts in the articulator.

Scannable

In response to the needs of CAD/CAM users across the globe, Virtual CADbite has been given a reflective surface. It delivers excellent results when capturing images with intra-oral scanning devices.

Delivery form

Multi Pack and Mixing Tips	12 x 50 ml	607909
Refill and Mixing Tips	2 x 50 ml	607908

Accessories

Refill Mixing Tips, small	48x	572806
---------------------------	-----	--------

* Centric Tray

Centric Tray is an impression tray for the time-saving determination of jaw relations in complete and partial denture prosthetics.



Advantages:

- Reliable determination of the centric relation
- Reusable, hence time-saving and economical

Delivery form

Centric Tray		559166
Centric Tray	1x	
Regular Supports	3x	
Supporting Wings	3x	

* Can only be ordered from authorized dealers of Ivoclar Vivadent technical.

NEW
1,200 mW/cm²

Bluephase® Style

The curing light



The smallest
LED for
every use



The licence to cure

Bluephase® Style – The smallest LED for every use

Bluephase® Style 20i – The powerful LED for every use

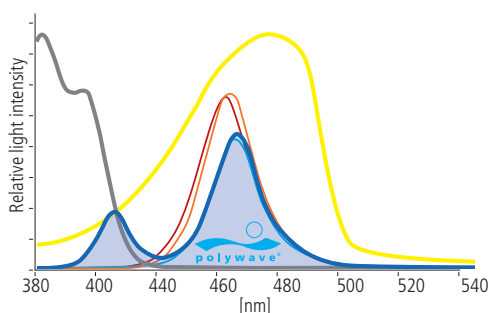
Bluephase® Style M8 – The LED for economical use

ivoclar
vivadent
passion vision innovation

Bluephase® – LED for every use and comfortable to fit every hand

In contrast to LED devices of the second generation, the Polywave® LED lights achieve an optimal broadband range from 385 to 515 nm, which is similar to the spectrum of halogen lights, which served as their model. The Bluephase curing lights are therefore capable of polymerizing all current photoinitiators and materials used in dentistry.

Wavelength range



Every material due to Polywave® LED

Bluephase is suitable for all light-curing materials because it is based on Polywave LED technology, which uses different LEDs with dominant wavelengths of approx. 410 nm and 470 nm.

- Photoinitiator: camphorquinone
- Photoinitiator Acyl Phosphine Oxide, e.g. Lucirin TPO
- Bluephase Style with Polywave LED²
- Elipar S10 *¹
- SmartLite PS *¹
- Demi Plus *¹

Source: R. Price, Dalhousie University Halifax, 2011



Every indication due to continuous cooling

Annoying interruptions and irritating waiting times are a thing of the past. The lights of the Bluephase range allow continuous operation without any clinical limitations – even when extensive indirect restorations are placed.



This is how it works: Turn around charging base, remove power cord, attach to handpiece, resume work as usual.

Every time due to Click & Cure

Cordless operation ensures maximum mobility in the dental practice. The proven Click & Cure function enables you to avoid irritating waiting times in case the battery has run out. With just one click you can connect the handpiece to the power cord of the charging base.



Bluephase Style is comfortable to hold in any position.

Every hand – comfortable to hold for men and women

Bluephase Style can be held in the hand in a position that is comfortable and free of strain to suit your preferences. The strain exerted on your arm and hand is very low – regardless of the size of your hand.

* These trade names are not registered trademarks of Ivoclar Vivadent AG.

¹ LED light of the 2nd generation

² LED light of the 3rd generation

Bluephase® Style – on an ergonomic mission

Bluephase® Style is a cordless LED curing light that offers a high light intensity (**new at 1,200 mW/cm²**). Given its compact shape, it comfortably fits the hands of women and men.

Indication:

Curing light for the polymerization of all dental materials in the wavelength range of 385 to 515 nm.



Advantages:

- Ergonomic shape to fit the hands of men and women
- polywave® LED with a broad light spectrum ranging from 385 to 515 nm, suitable for all materials
- Fanless construction for continuous operation without clinical limitations
- Click & Cure for battery-independent emergency corded operation
- Cordless design ensuring the ultimate in mobility
- High light intensity of 1,200 mW/cm² for reduced curing times starting from 10 seconds
- Easy operation due to intuitive 2-button operation
- Large treatment field due to 10-mm light guide
- Shortened light guide: all tooth surfaces can be easily reached, eliminating the need for extreme opening of the mouth
- Inductive charger enabling contactless charging of battery
- Base station with battery charge indicator for easy checking of battery charge levels from a large distance
- High capacity lithium polymer battery allowing 20 minutes of continuous operation
- Closed construction of the housing for optimum practice hygiene
- Easy cleaning of the charging base due to discharge opening
- Innovative movement sensor ensuring immediate readiness for operation
- 3-year warranty (battery 1 year)
- Available in three shades (grey, blue, pink and **now also in green**)

Delivery form

Bluephase® Style 100 – 240 V	grey	635153
	blue	642513
	pink	642514
	green	682460
Bluephase® Style 100 – 240 V (incl. Bluephase Meter II)	grey	674243
	blue	674242
	pink	674245
	green	682461
Bluephase® Style battery		637692
Bluephase® Style handpiece (handpiece, battery, light guide)	grey	637916
	blue	643296
	pink	643307
	green	682462

Bluephase® Style 20i – on a maximum mission

Bluephase® Style 20i is a high-performance curing light with a light intensity of 2,000 mW/cm² that combines **maximum light output with extremely short curing times of 5 s.**

Indication:

Light unit to polymerize all light-curing dental materials in a wavelength range of 385 – 515 nm.



Advantages:

- Up to 2,000 mW/cm² in the Turbo mode and therefore suitable for the polymerization of indirect restorations
- Extremely short curing times starting from only 5 seconds for time-saving and economic working procedures
- Polywave LED with a wavelength spectrum of 385 – 515 nm, suitable for curing all dental materials
- Four selectable exposure times and two selectable curing modes High Power (1,200 mW/cm²) and Turbo (2,000 mW/cm²) for all indications
- Cordless design for ultimate portability
- Easy operation due to intuitive two-button operation
- Shortened light guide enabling access to all tooth surfaces without extreme opening of the mouth
- Inductive charger enabling contactless charging of battery
- Charging base with battery charge indicator allows seeing the current charging status even from a great distance
- High-performance lithium polymer battery for 20 min operation in the High Power mode
- Seamless construction of the housing for optimum hygiene
- Charging base equipped with a discharge opening for easy hygienic cleaning procedures
- Innovative movement sensor for immediate operation
- 3-year warranty (1-year warranty for battery)

Delivery form

Bluephase® Style 20i 100 – 240 V	682109
Bluephase® Style 20i 100 – 240 V (incl. Bluephase® Meter II)	682108
Bluephase® Style 20i Battery	637692
Bluephase® Style 20i Handpiece (handpiece, battery, light guide)	682110

Bluephase® Style M8 – on an economical mission

Bluephase® Style M8 ist an economical, cordless LED curing light offering a light intensity of 800 mW/cm².

Indication:

Suitable for the polymerization of common light-curing dental materials in the wavelength range of 430–490 nm.

Advantages:

- An attractive price/performance ratio combined with proven Bluephase product quality
- Ergonomic, well balanced design for fatigue-proof operation
- High light intensity of 800 mW/cm² enabling reduced curing times starting from 15 seconds

- Shortened, 360° rotatable and autoclavable 10-mm light guide
- Cordless design for ultimate mobility in the dental office
- The handpiece is instantly ready-to-use upon touch given the innovative movement sensor
- Intuitive handling with 2-button operation
- Given the inductive charging of the battery, contaminated charging contacts are no longer an issue
- Charging base with blue pilot light to recognize the charging status from long distance
- Outlet in the charging base for easy and hygienic cleaning
- High-performance lithium polymer battery for an operating capacity of 30 minutes
- Closed housing construction for optimum hygiene
- 2-year warranty (battery 1 year)



Delivery form

Bluephase® Style M8 100 – 240 V	667505
Bluephase® Style M8 Battery	637692
Bluephase® Style M8 Handpiece (handpiece, battery, light guide)	667496

Bluephase® Meter II The dental radiometer

Bluephase® Meter II is a precise dental radiometer for the quick and easy verification of the light intensity of all types of curing lights.

Indication:

Enables exact and unrestricted verification of the light intensity in [mW/cm²] and the light output in [mW] of all curing lights in the wavelength range of 380–550 nm with an accuracy tolerance of ±10% as compared to the measurement with an integrating sphere.

Advantages:

- Innovative measuring principle offering a unprecedented measuring accuracy for dental radiometers
- Universally applicable for any curing light (halogen-, plasma-, LED-devices, etc.)
- Integrated template to determine the diameter of circular guides between 6–12 mm
- Additional program to determine the light output in milliwatt [mW] analogue to integrating sphere
- Digital display
- Ergonomic and modern design
- 3-year warranty



Delivery form

Bluephase® Meter II	667124
---------------------	--------

Technical Data

	Bluephase® Style M8	Bluephase® Style	Bluephase® Style 20i
Light intensity	800 mW/cm² ±10 %	1'200 mW/cm² ±10 %	2'000 mW/cm² ±10 %
Every hand (ergonomic design)	✓	✓	✓
Every material (wavelength range)	– 430–490 nm)	✓ (385–515 nm)	✓ (385–515 nm)
Every indication (continuous operation for at least 10 min)	✓	✓	✓ (HIGH POWER)
Every time (Click & Cure: optional mains operation)	–	✓	✓
Curing modes HIGH POWER TURBO	800 mW/cm² –	1,200 mW/cm² –	1,200 mW/cm² 2,000 mW/cm²
Curing time for selected composite materials 2 mm Tetric EvoCeram / IPS Empress Direct 4 mm Tetric EvoCeram Bulk Fill / Tetric EvoFlow Bulk Fill	15 s 15 s	10 s 10 s	5 s 5 s
Power supply	Contactless charging via lithium-polymer battery, capacity: approx. 20 min; charging time: approx. 2 h		
Weight of handpiece	120 g (incl. battery and light guide)		
Dimensions of handpiece (without light guide)	L = 180 mm, B = 30 mm, H = 30 mm		
Weight of charging base	195 g		
Dimensions of charging base	D = 125 mm, H = 70 mm		
Warranty	2 years (battery: 1 year)	3 years (battery: 1 year)	

Delivery forms and accessories

	Bluephase® Style M8	Bluephase® Style	Bluephase® Style 20i
Complete curing light 100 – 240 V	667 505	635 153 grey 642 513 blue 642 514 pink 682 460 green	682109
Complete curing light 100 – 240 V & Bluephase Meter II	674 245	674 243 grey 674 242 blue 674 244 pink 682 461 green	682108
Bluephase Meter II	667 124	✓	✓
10-mm light guide, black	667 497	■	–
10-mm light guide, black	636 240	–	■
10 > 8-mm light guide, black	627 389	–	–
6 > 2-mm (Pin-Point), black	636 241	✓	✓
Protective sleeves	636 239	✓	■
Anti-glare cone	551 756	■	■
Anti-glare shield	592 496	✓	■
Battery	637 692	✓	✓
Handpiece (handpiece, battery, light guide)	667 496	637 916 grey 643 296 blue 643 307 pink 682 462 green	613 753

■ Included in delivery form ✓ Available as accessory

Silamat® S6

Form and function – perfectly mixed.

Indication:

- Modern universal mixer for amalgam, glass ionomer cements and other predosed dental materials in capsules and injection capsules



Advantages:

- Attractive design for the modern dental practice
- Thanks to its rounded shape and the removable cover the unit can be cleaned easily
- Tried-and-tested Silamat technology
- Above-average speed of 4500 rpm
- Special figure-eight pattern and patented mixing fork
- Compatible with all popular capsules and injection capsules in various shapes and sizes
- Three-year warranty
- Voltage 100–240 VAC

Delivery form

Silamat® S6	100 – 240 VAC	602286
-------------	---------------	--------

Programat® CS2

The second generation of the Programat® CS series is the ideal ceramic and crystallization furnace for dentists. The furnace has been specially developed for the crystallization of IPS e.max® CAD restorations. The Programat CS2 is easily operated by means of the new colour touch screen and the proven membrane-sealed keypad. It is furthermore equipped with 20 individual programs as well as predefined Ivoclar Vivadent programs, such as the Speed program, which crystallizes IPS e.max CAD restorations in less than 15 minutes.

The new and modern operating concept and the QTK2 muffle technology are only two of the many new innovations featured in the Programat CS2. The QTK2 muffle technology is responsible for even more homogeneous heat distribution in the firing chamber, leading to optimum firing results and a prolonged life cycle of the heating element. Additionally, the new vacuum pump control system with double valve technology ensures noiseless and power-saving operation of the vacuum pump.

Technical Data:

- Voltage: 200 – 240 V / 50 – 60 Hz
110 – 120 V / 50 – 60 Hz
100 V / 50 – 60 Hz
- Dimensions of the closed furnace: Depth: 465 mm
Width = 305 / 410 mm (with cooling tray)
Height: 320 mm
- Usable size of the firing chamber: Diameter: 90 mm, height: 80 mm
- Max. firing temperature: 1200 °C

Advantages:

- Colour touch screen and proven membrane-sealed keypad
- QTK2 muffle technology with SiC bottom reflector
- Easy operation; specially developed for use in the dental practice
- Automatic double-range temperature calibration (ATK2)
- Remote diagnostics via Internet, e-mail and data log files
- Software updates via USB flash drive
- Power-saving technology
- Optical Status Display (OSD)
- Modern and ergonomic design
- Modern interfaces (USB, Ethernet interface, SD card reader)
- Large cooling tray
- Integrated tong holder
- 20 individual firing programs
- Double valve vacuum technology
- Removable furnace head
- Power Fail Save System

Colour:

White

Delivery form

Programat® CS2	200 – 240 V / 50 – 60 *	645986
----------------	-------------------------	--------

Programat CS2, power cord, vacuum hose, Programat Firing Tray Kit, Automatic Temperature Checking Set 2 ATK2 (test set), USB download cable, Programat USB flash drive

* other voltage versions available



Programat® CS3

The Programat® CS3 is the ideal ceramic and crystallization furnace for dentists with high demands. It has been especially developed for the crystallization of IPS e.max® CAD restorations. The furnace is operated via the 7-inch colour touch screen with a specially developed operating concept for the dental practice and the well-proven membrane-sealed keypad. The Programat CS3 features over 30 individual programs and preset Ivoclar Vivadent programs, one of which is the Speed program which crystallizes IPS e.max CAD restorations in less than 15 minutes.

With the help of the patented Digital Shade Assistant (DSA) the selection of the tooth shade can be achieved instantly. The software compares the tooth to be analyzed with three pre-selected shade guide teeth in a picture. A special image processing software recognizes the tooth to be analyzed and the three shade guide teeth. The best matching tooth shade is displayed on the furnace screen as a result.

The proven QTK2 muffle technology ensures an even more homogenous heat distribution in the firing chamber. Optimal firing results are achieved and the life cycle of the heating element is prolonged. The new vacuum pump control system with double valve technology ensures noiseless and power-saving operation.

Technical Data:

- Voltage: 200 – 240 V / 50 – 60 Hz
110 – 120 V / 50 – 60 Hz
100 V / 50 – 60 Hz
- Dimensions of the closed furnace: Depth: 495 mm
Width: 320 mm / 395 mm (with cooling tray)
Height: 320 mm
- Usable size of the firing chamber: Diameter: 90 mm, height : 80 mm
- Max. firing temperature: 1200 °C



Advantages:

- Firing and crystallization furnace with integrated DSA function for the digital analysis of the tooth shade.
- Colour touch screen in combination with the proven membrane-sealed keypad.
- Operating concept specially developed for the dental practice.
- QTK2 muffle technology with SiC bottom reflector
- Automatic double-range calibration (ATK2)
- Remote diagnostics through the Internet via e-mail and data log files
- Integrated power-saving function (Power-Saving Technology)
- Optical Status Display (OSD)
- Modern, ergonomic design
- Software updates via USB flash drive
- Programat WLAN Kit for wireless data transfer (software updates, PrograBase X10)
- Modern interfaces (USB, ethernet, SD card reader)
- Large cooling tray
- Integrated tong holder for firing goods
- 30 individual firing programs
- Double valve vacuum technology
- Removable furnace head
- Power Fail Save System

Colour:

White

Delivery form

Programat CS3	200 – 240 V / 50 – 60 *	681117
---------------	-------------------------	--------

Programat CS3, power cord, vacuum hose, cooling tray, SiC firing table, Firing Tray Kit, Automatic Temperature Checking Set ATK 2 (test set), extra fuses, USB cable, CD-ROM "PrograBase X10", Programat USB flash drive, Programat WLAN Kit, cleaning cloth for display, tong holder, firing tongs, Digital Shade Assistant Holder Kit, A-D Shade Guide, IPS e.max CAD Speed Crystallization Tray

* other voltage versions available

* Vacuum Pump VP5

The high-performance Vacuum Pump VP5 has been especially developed for the Ivoclar Vivadent ceramic and press furnaces. The pump features a very high delivery rate. In addition, it is characterized by a clear design and a carrying handle for convenient relocation.

Technical Data:

- Voltage: 230 V / 50 – 60 Hz
200 V / 50 – 60 Hz
115 V / 50 – 60 Hz
100 V / 50 – 60 Hz
- Power consumption: 80 Watt
- Final vacuum: approx. 20 mbar

Colour:

Standard colour: white (no special colours available)



Advantages:

- Modern, ergonomic design
- High vacuum performance
- High final vacuum (approx. 20 mbar **)
- High running smoothness
- Integrated carrying handle

Delivery form

Vacuum Pump VP5 (white)	230 V / 50–60 Hz*	666308
Vacuumpump VP5		1x
Sound absorber		1x
Vacuum pump filter kit		1x

* other voltage versions available

** measured with a 4-liter test container

* Vacuum Pump VP3 easy

The small and light-weight VP3 easy vacuum pump is suitable for the evacuation of the firing chamber in the Programat CS. The diaphragm pump is characterized by low weight and extremely small dimensions.

Technical Data:

- Voltage: 230 V / 50 – 60 Hz
200 V / 50 – 60 Hz
115 V / 50 – 60 Hz
- Power consumption: 70 W
- Dimensions: 140 x 130 x 210 mm (W x H x D)

Advantages:

- Light weight
- Small dimensions
- Final vacuum: approx. 40 mbar

Colour:

grey



Delivery form

Vacuum Pump VP3 easy (grey)	230 V / 50 – 60 Hz *	594554
Vacuumpump VP3 easy		1x
Sound absorber		1x
Vacuum pump filter kit		1x

* other voltage versions available

* Can only be ordered from authorized dealers of Ivoclar Vivadent technical.

* Vacuum Pump Filter Kit

This vacuum pump filter kit protects the vacuum pump from contamination.



Delivery form

Vacuum Pump Filter Kit	680188
Vacuum pump filter kit	1x
Vacuum hose 200 mm	1x

* Programat® Firing Tray Kit 2

The Firing Tray Kit 2 was specially developed for the Programat® furnaces. The support pins can be individually mounted to the firing tray if required.



Delivery form

Programat Firing Tray Kit 2	655946
Firing Trays	2x
Support Pins A	6x
Support Pins B	6x
Fan Pins	2x
Ceramic Sleeves	2x
Hobbyceram Pen	1x

* Metal Pins for Firing Tray

The support pins can be used for the Programat firing tray and can be mounted to the honeycomb firing tray if required.



Delivery form

Metal Pins for Firing Tray, Refill	626698
Metal Pins A	4x
Metal Pins B	4x
Metal Pins C	4x

* Can only be ordered from authorized dealers of Ivoclar Vivadent technical.

* Ceramic Sleeves for Metal Pins

The ceramic sleeves can be placed on the metal pins to avoid that metal-free restorations come in contact with the metal pins.



Delivery form

Ceramic Sleeves for Metal Pins Refill	666068
Ceramic Sleeves	10x

* Automatic Temperature Checking Set "ATK 2"

The automatic temperature checking set "ATK 2" is used to check and adjust the firing temperatures in furnaces with automatic calibration programs for the ATK2 system (e.g. Programat CS/CS2). The simultaneous double-range calibration is a special feature of the ATK2.



Delivery form

Automatic Temperature Checking Set "ATK 2"	598833
ATK 2 Samples	5x

* Firing Tongs

These firing tongs are used to place objects in the firing chamber. High precision and excellent material quality are the special features of these tongs.



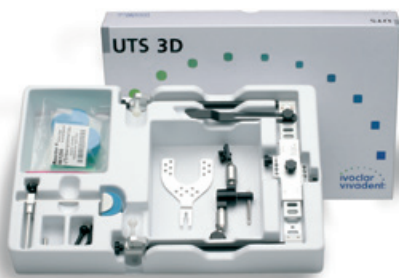
Delivery form

Firing Tongs	1x	530665
---------------------	-----------	---------------

* Can only be ordered from authorized dealers of Ivoclar Vivadent technical.

* UTS 3D Universal Transferbow System

This system permits skull/joint-related orientation of models into the Stratos articulators according to patients' individual data. The UTS 3D is adjustable according to the Frankfort Horizontal (FH), Campers Plane (CP), or Median Sagittal Plane (MSP). The flexible modular construction of the transferbow permits its use with most articulator systems currently on the market.



Advantages:

- 3D-registration joint for rapid and precise fixation, with only one tommy screw
- Solid, light carbon-fibre constructions for improved convenience
- Ear pieces can be exchanged and disinfected
- Exchangeable nosepad

Delivery form

UTS 3D		593710
Adjustable nosepiece		1x
SMP indicator		1x
Reference plane indicator (CE / FH)		1x
Axis pins		2x
Earpieces		2x
Registration joint		1x
Bite fork		1x
Nose pads		10x

* Gnathometer M Type 2

Intraoral registration device according to Prof Dr Böttger for the determination of occlusal positions of edentulous patients. Permits fast and easy control of occlusal positions by needle-point tracing.



Advantages:

- Functional impression and registration in one appointment
- Multiple use; can be disinfected
- Connector for the UTS 3D transfer bow

Delivery form

Gnathometer M Type 2 (complete)	1x	530484
---------------------------------	----	--------

* Can only be ordered from authorized dealers of Ivoclar Vivadent technical.

* Stratos® 100

The Stratos® 100 is a biofunctional average-value articulator for various simple dental reconstructions. Its ergonomic design with spacious column construction enables easy and efficient handling. The Stratos 100 is the ideal articulator to set up Ivoclar Vivadent teeth according to the Biofunctional Prosthetic System (BPS).



Advantages

- Centric locking catch
- Separable upper and lower frame
- Optimized joint mechanics with a protrusion path angle of 30° and a Bennett angle of 30° or 15°
- Compatible with split-cast systems
- Protrusion shift

Delivery form

Stratos® 100	576820
Stratos 100	1x
Incisal plate 0°	1x
Incisal indicator	1x
Base blocks retentive	1x
Plaster protective plate	1x

* Stratos® 200

The Stratos® 200 is a biofunctional articulator which is universally applicable due to its various options. Its ergonomic design with incline supports permits ample working space. Standard equipment contains additional 30° or 15° protrusion inserts for fixed or swivel axis, 30° Bennett inserts, and a 0° incisal plate, as well as an incline support holder.



Advantages:

- Centric locking catch
- Upper and lower frame can be separated easily and controllably
- Optimum joint mechanic with exchangeable Bennett/protrusion inserts
- Compatible with split-cast systems
- Side shift 0–1.5 mm
- Protrusion shift

Delivery form

Stratos® 200	536381
Stratos 200	1x
Protrusion inserts 30°	2x
Bennett inserts 30°	2x
Incisal plate 0°	1x
Incisal indicator	1x
Base blocks retentive	2x
Plaster protective plate	1x
Incline support holder	1x

* Stratos® 300

The Stratos® 300 is a biofunctional, individually adjustable articulator. All the joint angles can be continuously set without having to replace any elements. The Stratos 300 is suitable for demanding restorations for which the joint angles have to be individually set. Its ergonomic design with spacious column construction enables easy and efficient handling.



Advantages:

- Centric locking catch
- Separable upper and lower frame
- Optimized joint mechanics with continuously adjustable angles
 - Protrusion 0°–60°
 - Retrusion 35°
 - Bennett 0°–30°
 - Side shift 0–1.5 mm
 - Protrusion shift 0–4 mm
- Possibility of individual and average-value model orientation
- Compatible with split-cast systems

Delivery form

Stratos® 300	576821
Stratos 300	1x
Incisal plate 0°	1x
Incisal indicator	1x
Base blocks retentive	2x
Plaster protection plate	1x

* Can only be ordered from authorized dealers of Ivoclar Vivadent technical.

Ivoclar Vivadent

Oral Health Management

The Professional Care Program from Ivoclar Vivadent offers a system of professional solutions.

Evaluation		Low Caries Risk	High Caries Risk	
Findings	Plaque accretion	Plaque Test	✓	
	Initial lesion		✓	
	Mutans streptococci (CFU/ml saliva)	CRT bacteria	< 10 ⁵	≥ 10 ⁵
	Lactobacilli (CFU/ml saliva)	CRT bacteria	< 10 ⁵	≥ 10 ⁵
	Salivation rate (ml saliva/min)	CRT bacteria	≥ 1	< 0.7
	Buffer capacity	CRT buffer	high	low

Recommended treatment

Dental practice	Targeted recording of case history		✓	
	Check-ups		✓ 2x/yr	✓ 4-6x/yr
	Re-assessment of caries risk	CRT bacteria	✓	✓
		CRT buffer	✓	✓
	Bitewing X-ray for the early detection of proximal caries		✓	✓
	Restoration of carious lesions	Tetric EvoCeram	✓	✓
		Tetric EvoFlow	✓	✓
		Bluephase	✓	✓
	Reconstruction	IPS e.max CAD/Press	✓	✓
		Variolink Esthetic	✓	✓
	Removal of plaque retention sites		✓	✓
	Protection of exposed cervicals	VivaSens	✓	✓
	Fissure sealing	Helioseal		✓
	Topical fluoride application	Fluor Protector	✓ 2x/yr	✓ 4-6x/yr
	Motivation and instruction for oral hygiene improvement		✓	✓
	Professional tooth cleaning	Proxyt, OptraGate	✓	✓
	Topical application of chlorhexidine	Cervitec F		✓
Cervitec Gel			✓	
Nutrition counselling			✓	

Measures

At home	Dentifrice containing fluoride		✓	✓
	Cleaning of interdental spaces		✓	✓
	Rinsing solution or gel containing fluoride	Fluor Protector Gel		✓
	Preparations with chlorhexidine	Cervitec Gel, Cervitec Liquid		✓
	Preparations with bicarbonate			✓
	Balanced diet		✓	✓
	Hard-to-chew food			✓
	Sweets and chewing gum with sugar substitute	Wrigley's ORBIT sugarfree gum		✓

In cooperation with the Centre for Dentistry and Oral Medicine, University Clinic Jena, Friedrich-Schiller University of Jena, Germany

CRT® bacteria

For determining the mutans streptococci and lactobacilli count in saliva and plaque.



Advantages:

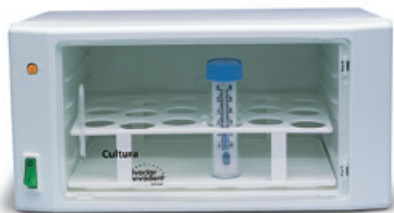
- Two-in-one: Determining the mutans streptococci and lactobacilli count
- High selectivity of the culture media
- Hygienically sealed agar surfaces
- Excellent scientific backup
- Quick and easy to conduct
- Basis for individual and targeted therapy

Delivery form

Intro Pack		553545
Dip CRT bacteria	3x	
Test Strips CRT buffer var. accessories	3x	
Refill CRT bacteria, var. accessories	6x	553543
Refill CRT Paraffin	6x	553546

* Cultura

Small incubator for incubation of yeast and bacterial cultures in the dental practice.



Technical Data:

- Operating voltage: 220–240 V/50–60 Hz
100–120 V/50–60 Hz
- Rated capacity: 30 W/0,2 A
- Temperature range for incubation: +30 °C bis +45 °C ± 1 °C

Delivery form

Cultura Incubator	220 – 240 V	535339
	100 – 120 V	538325

CRT® buffer

For determining the buffer capacity of saliva.



Advantages:

- Individually packed test strips
- Reliable results
- Quick and easy to conduct
- Results available after only five minutes

Delivery form

Refill CRT® buffer, var. accessories	6x	553544
---	-----------	---------------

* Not available in all the countries

Plaque Test

Fluorescent disclosing liquid to reveal bacterial biofilm on the surfaces of natural and restored teeth or implants.



Advantages:

- Fluorescent under any curing light
- Easy handling
- No inconvenient staining of tongue and mucous membranes

Delivery form

Refill	1 x 11 g	533299
--------	----------	--------

Proxyl[®]

The prophy paste system with defined Relative Dentin Abrasion values (RDA) enables professional cleaning and polishing of teeth, restorations and implants according to the individual needs of patients. The pastes contain xylitol, which inhibits the growth of the bacteria that cause caries.



Containing fluoride

Proxyl RDA 83, coarse
Proxyl RDA 36, medium
Proxyl RDA 7, fine

Fluoride-free

Proxyl RDA 36, medium

Advantages:

- Customized, gentle cleaning and polishing
- Scratch-free cleaning of sensitive surfaces using the fine Proxyl without pumice
- Smooth consistency, splatter-free formula
- Fresh peppermint taste

Delivery form

Refill		
RDA 7, fine	1 x 55 ml	579866
RDA 36, medium	1 x 55 ml	579867
RDA 83, coarse	1 x 55 ml	579868
RDA 36, medium fluoride-free	1 x 55 ml	633064

Cervitec® F

The protective varnish with 1,400 ppm fluoride, chlorhexidine and CPC (cetylpyridinium chloride) for fluoride application and germ control in one working step.



Recommended applications:

- Caries prevention in high-risk groups
- Fluoridation of dental enamel
- Remineralization of incipient lesions
- Protection of hypersensitive teeth
- Protection against bacterial activity

Advantages:

- Combined protection in high-risk cases
- Relatively high tolerance to moisture
- Mild taste
- Suitable for all age groups

Delivery form

Refill Tube, var. accessories	1 x 7 g	665502
	2 x 7 g	665503
Refill Single Dose, var. accessories	20 x 0.26 g	665504

Cervitec® Plus

Chlorhexidine-containing protective varnish with 1% chlorhexidine plus 1% thymol for the professional bacterial control in patients with high caries risk. Cervitec® Plus also offers intensive protection in order to maintain the quality of restorations.



Indications:

- Protection of exposed root surfaces
- Treatment of hypersensitive cervicals
- Reduction of bacterial activity on tooth surfaces

Advantages:

- Sealing of exposed dentinal tubules
- Targeted treatment of particularly susceptible areas
- Long-term availability of active ingredients
- Prevention of the side effects commonly associated with chlorhexidine
- Suitable for all age groups

Delivery form

Assortment Single Dose, var. accessories	20 x 0.25 g	602271
Assortment Tube, var. accessories	1 x 7 g	602273
Refill Tube, var. accessories	2 x 7 g	604661

Cervitec® Liquid

Alcohol-free antimicrobial mouth rinse containing 0.1% chlorhexidine and xylitol plus essential oil.



Recommended applications:

- As an intensive, temporary mouth rinse treatment
- To maintain the healthy condition of oral mucosa and gums as well as the dental supporting tissue
- Before and after implantological and periodontal interventions and dental and orthodontic surgery
- In the event of high caries risk
- In case of restricted oral hygiene ability
- To prevent halitosis

Advantages:

- Reduction of bacterial growth
- High level of compliance due to mild taste
- Suitable for patients who need to avoid alcohol

Delivery form

Bottle	1 x 100 ml	630260
	1 x 300 ml	630221

Cervitec® Gel

Oral care gel containing 0.2% chlorhexidine, 900 ppm fluoride, provitamin D-panthenol and xylitol.



Recommended applications:

- As a concomitant measure in the prevention of diseases of the gums, oral mucous membrane and the peri-implant tissue
- As a concomitant measure in the management of inflammatory diseases such as gingivitis, mucositis, denture stomatitis, periodontitis or peri-implantitis
- In the case of elevated bacteria counts

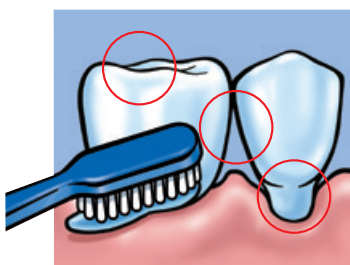
Advantages:

- Provitamin D-panthenol and xylitol moisturize and soothe the gums and mucous membrane
- Smooth consistency - easy dispersion
- Mild taste

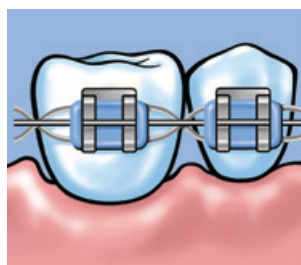
Delivery form

Tube	1 x 50 g	683123
	1 x 20 g	683125
Denture cleaning set	1 x 20 g	681411

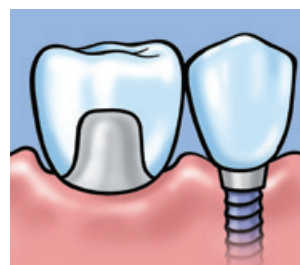
1 Tube, 1 storage container, var. accessories



special care of problem areas



with braces



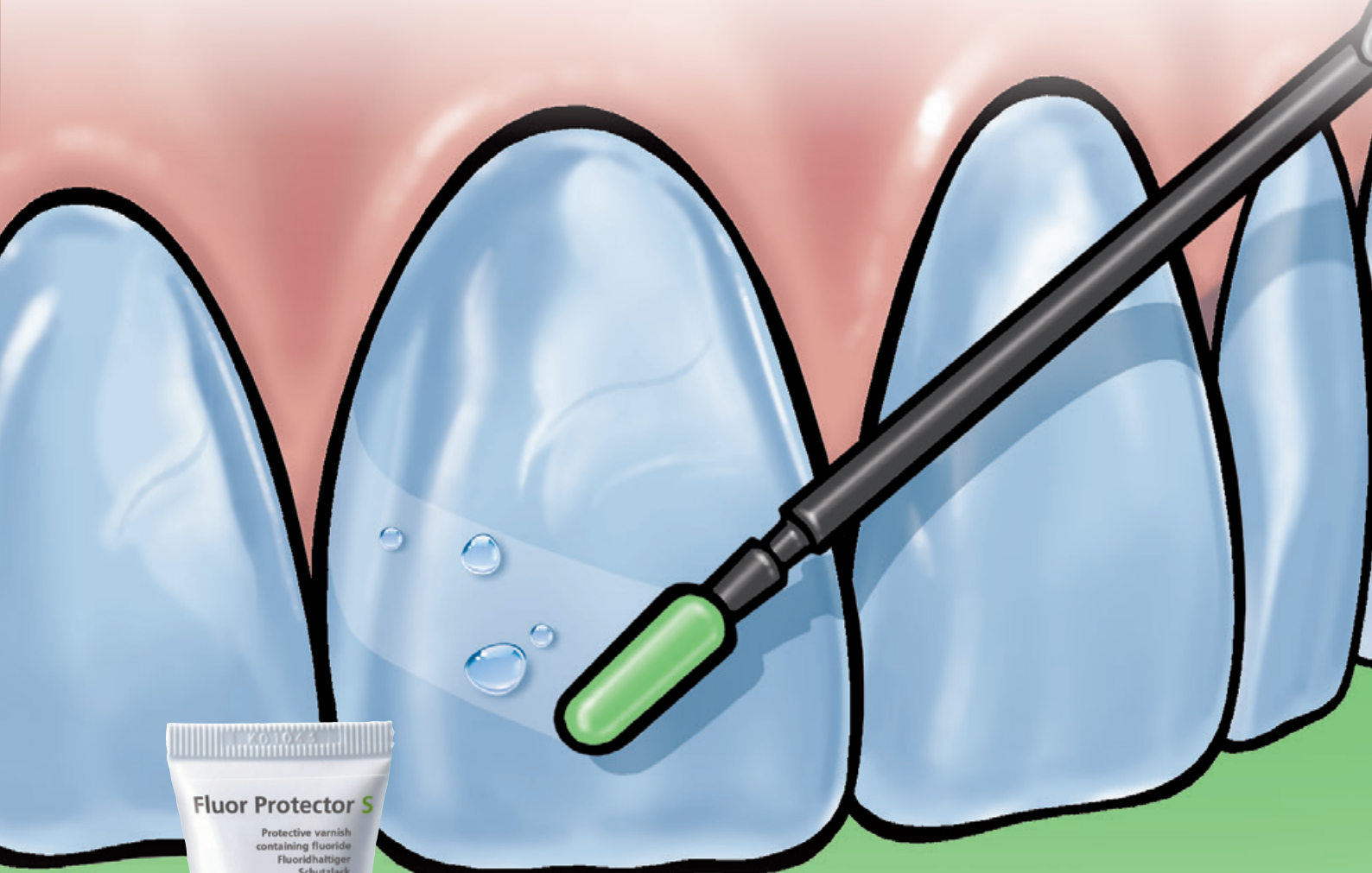
with crowns and implants



with removable tooth replacements

Fluor Protector S

The protective fluoride varnish



Superior protection
against dental caries
and erosion


ivoclar
vivadent[®]
passion vision innovation

Fluor Protector S

Protective fluoride varnish for the desensitization of teeth and protection against dental caries and erosion.



Indications:

- Treatment of hypersensitive cervicals
- Build-up of acid resistance of dental enamel
- Long-term caries prevention
- Treatment of sensitivity after tooth whitening

Advantages:

- 7,700 ppm fluoride in a homogeneous solution
- Immediate fluoridation of enamel
- High-yielding fluoride depot
- Mild taste
- Suitable for all age groups

Delivery form

Refill Tube, var. accessories	1 x 7 g	639520
	3 x 7 g	639521
Refill Single Dose, var. accessories	20 x 0.26 g	639522

Fluor Protector

Protective varnish containing fluoride for desensitization and caries prophylaxis.



Indications:

- Closing of open dentin tubules
- Prevention of demineralization
- Stimulation of remineralization
- Remineralization of incipient caries

Advantages:

- 1,000 ppm fluoride in a homogeneous solution
- Highly esthetic
- Excellent adhesion
- Suitable for all age groups
- Comprehensive clinical documentation

Delivery form

Ampoules

Assortment, var. accessories	25 x 1 ml	533294
Refill, var. accessories	50 x 1 ml	533293

VivAmpoule

Assortment, var. accessories	20 x 0.4 ml	550578
Refill, var. accessories	40 x 0.4 ml	550579

Fluor Protector Gel

The special gel with calcium, phosphate and fluoride for intensive but gentle dental care.



Recommended applications:

- Special dental care to protect against caries, erosive wear and periodontal disease
- Sensitive teeth
- Exposed cervicals
- With acidic diets
- With dry mouth
- During orthodontic treatment
- After professional tooth cleaning
- During tooth whitening

Advantages:

- Calcium + 1450ppm fluoride + phosphate protect the teeth from acid attacks.
- Xylitol inhibits the growth of cariogenic bacteria.
- D-panthenol is soothing to the gums.

Delivery form

Tube	1 x 20 g	628437
	1 x 50 g	628436

Helioseal® Helioseal® F Helioseal® Clear

Light-curing, resin-based fissure sealants for the preventive sealing of pits and fissures, using the enamel etching technique.



Helioseal®

White-shaded sealant that permits easy control during application and at recalls.

Helioseal® F

White-shaded sealant with additional fluoride release

Helioseal® Clear

Transparent sealant for excellent esthetic results and easy monitoring of fissures in case of doubt

Advantages:

- Precise application, the basis for top quality sealing results
- Well-proven in many years of clinical use
- Effective protection against caries

Delivery form

Helioseal®

Assortment	1 x 8 g	533298
Helioseal, Email Preparator blue, var. accessories		
Refill Bottle	1 x 8 g	533297

Helioseal® F

Assortment	5 x 1.25 g	558518
Helioseal F, Email Preparator blue, var. accessories		
Refill Syringe	1 x 1.25 g	558519
Refill Cavifils	50 x 0.1 g	543793

Helioseal® Clear

Assortment	5 x 1.25g	558520
Helioseal Clear, Email Preparator blue, var. accessories		
Refill Syringe	1 x 1.25 g	558521

VivaSens®

Desensitizing varnish for hypersensitive teeth.



Indications:

- Hypersensitive cervicals
- Hypersensitivities due to bleaching
- Desensitization after professional tooth cleaning, scaling and root planing
- Dentin protection under restorative materials

Advantages:

- Long-term relief
- Quick to work
- Quick to use
- Gentle to gums
- Free Stand Single Dose – free-standing with grip surface

Delivery form

Single Dose

Assortment, var. accessories	22 x 0.1 g	561958
------------------------------	------------	--------

Bottle

Assortment, var. accessories	1 x 4 g	574359
------------------------------	---------	--------

VivaStyle®

The professional system for tooth whitening, featuring carbamide peroxide or hydrogen peroxide.
The professional solution for individual needs.

Advantages:

- In-office or at-home use
- Different concentrations of the active agent
- Application:
 - Gel with custom-made tray
 - Varnish system applied with a brush



VivaStyle® Paint On Plus

A varnish system with 6% hydrogen peroxide for in-office or at-home use. Direct application with a brush – no trays required.



Indications:

- Whitening of vital and non-vital teeth
- External

Advantages:

- Varnish system: for targeted use on the spot
- D-Panthenol: provitamin
- Whitening: after just seven days
- In the dental office: intensive treatment

Delivery form

Patient Kit	1 x 20 ml	602873
--------------------	------------------	---------------

1 Tube, 14 brushes, 14 dispensing dishes, var. accessories

VivaStyle® 10%

VivaStyle® 16%

A gel containing either 10% or 16% carbamide peroxide for at-home treatment. It is applied with a customized tray.



Indications:

- Whitening of discoloured vital or non-vital teeth
- Internal and external

Advantages:

- Specially adjusted viscosity
- Calibrated, re-sealable syringe
- Soft and gentle tray material

Delivery form

VivaStyle® 16 %

Patient Kit	4 x 3 ml each	646032
4 Syringes, 2 Tray Sheets, 1 Tray Case, var. accessories		

Touch Up Kit	2 x 3 ml each	646033
2 Syringes		

VivaStyle® 10 %

Patient Kit	4 x 3 ml each	645980
4 Syringes, 2 Tray Sheets, 1 Tray Case, var. accessories		

Touch Up Kit	2 x 3 ml each	646031
2 Syringes		

Tray Sheet Refill	12 x	558805
--------------------------	-------------	---------------

Skyce®

Crystal glass ornaments that are bonded to the labial surfaces of natural upper anterior teeth without previous preparation.



Skyce is available in 2 sizes:

Approx. 1.9 mm and 2.4 mm

Shade:

Crystal

Delivery form

Intro Pack		559320
-------------------	--	---------------

Heliobond, Total Etch, Skyce Refill crystal small, + Refill crystal large, var. accessories

Refill cristal small	5x	559321
-----------------------------	-----------	---------------

Refill cristal large	5x	559322
-----------------------------	-----------	---------------

OptraGate®

The **latex-free** OptraGate® lip and cheek retractor allows the treatment field to be enlarged effectively and comfortably. OptraGate retracts the lips and cheeks gently and evenly over a large area, allowing a more effective relative isolation of the treatment field. OptraGate is comfortable to wear as it is three-dimensionally flexible. The improved padding of the lip and cheek retractor as well as the recesses to accommodate the upper and lower lip frenulum increase the patient comfort – even during longer treatment sessions.

OptraGate in the two sizes Junior and Small is now available in two playful colours, blue and pink. The choice of colours is particularly interesting to children and adolescents and contributes to enhancing patient compliance.

Indication:

Suitable for use in diagnostic, preventive and therapeutic dental procedures (in particular restorative procedures, cavity preparation, professional tooth cleaning, diagnostic procedures, scaling and root planing, tooth whitening, impression taking).

Advantages:

- Efficient treatment and more effective relative isolation
- Enlarged treatment field and accessibility of the cavity
- Comfortable to wear for patients

Delivery form

OptraGate® white

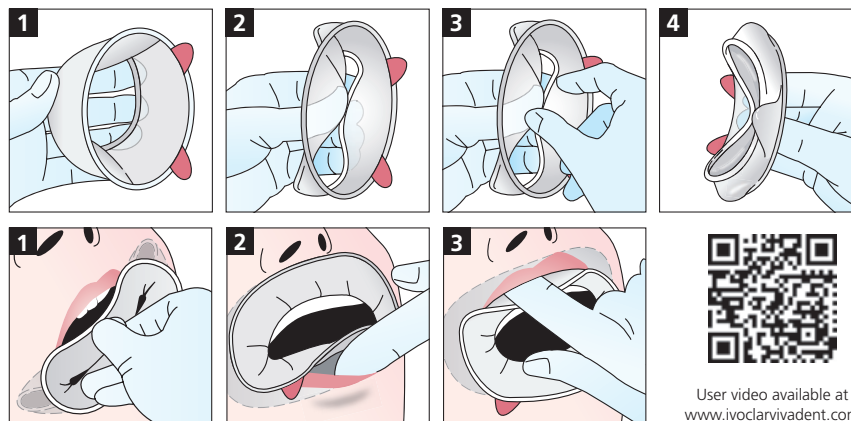
Assortment		577275
OptraGate Regular, white	40 x	
OptraGate Small, white	40 x	
Refill		
Regular	80 x	590850
	40 x	683377
Small	80 x	590851
	40 x	683378
Junior	80 x	591451
	40 x	683376

OptraGate® blue and pink

Starter Kit/blue + pink		669087
OptraGate Junior, blue	4 x	
OptraGate Junior, pink	4 x	
OptraGate Small, blue	4 x	
OptraGate Small, pink	4 x	
Assortment Junior/blue + pink		669089
OptraGate Junior, blue	20 x	
OptraGate Junior, pink	20 x	
Assortment Small/blue + pink		669088
OptraGate Small, blue	20 x	
OptraGate Small, pink	20 x	



(Ivoclar Vivadent AG, Liechtenstein)



OptraDam® Plus

OptraDam® Plus is an anatomically shaped rubber dam for the absolute isolation of the working field. It offers the clinician increased visibility and accessibility. In addition, the device facilitates the evacuation of water spray. OptraDam Plus provides patient comfort and assists in keeping the patient's mouth open due to its three-dimensional flexibility.



(Ivoclar Vivadent AG, Liechtenstein)

Indication:

Suitable for use in therapeutic dental procedures for which an absolutely dry and isolated working field is required (e.g. for adhesive cementation, filling therapy and root canal treatments).

Advantages:

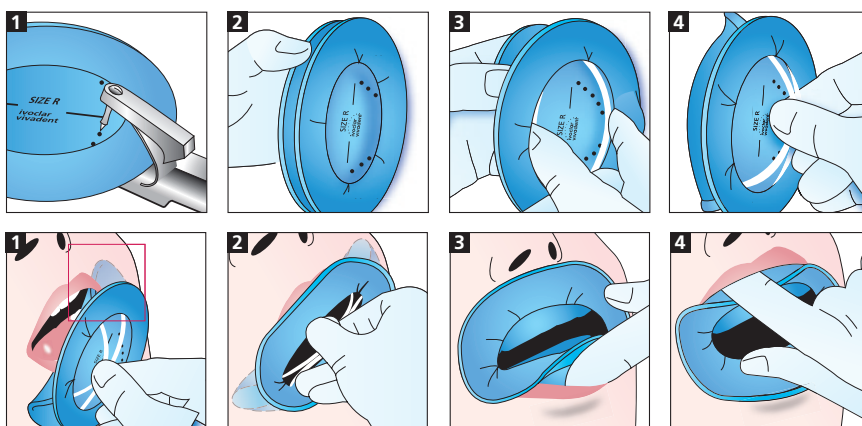
- Easy application thanks to the integrated frame and pre-printed arch template
- High patient comfort thanks to the flexible, three-dimensional design
- Simultaneous isolation of both arches thanks to the tension-free placement

Delivery form

Assortment		627401
OptraDam Plus Regular	25x	
OptraDam Plus Small	25x	

Refill

Regular	50x	627399
Small	50x	627400



OptraSculpt® Next Generation

OptraSculpt Next Generation is a contouring instrument for the efficient contouring of composite restorations in the posterior region. The two-components attachments produced in a special procedure facilitate the modelling of smooth and esthetic high-quality filling surfaces. The attachment shapes specifically designed for the posterior region allow for a natural-looking recreation of anatomical tooth structures such as cusp slopes, fissures and proximal margins.



Indication:

Suitable for adapting, shaping and contouring uncured sculptable composite materials. Also suitable for lab composites.

Advantages:

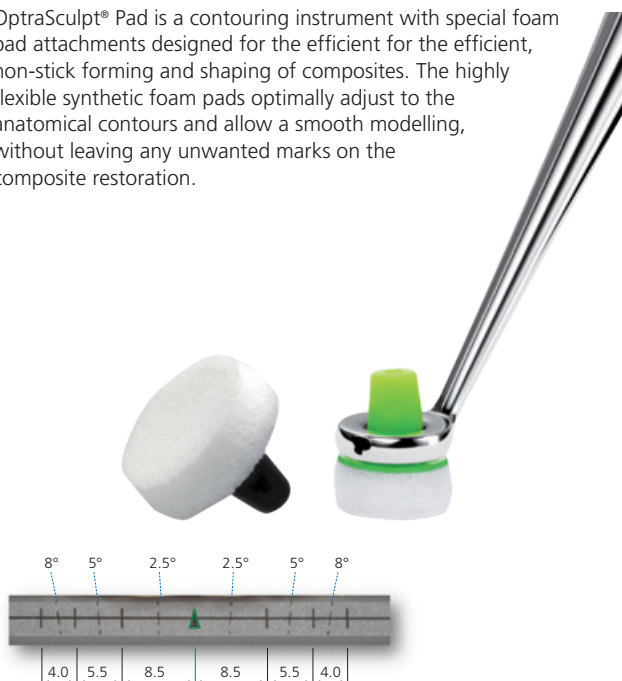
- Three attachment shapes for the professional creation of sophisticated anatomical tooth structures
- Optimum working angle for the posterior region
- Hygienic dispenser box for easy access to attachments

Delivery form

OptraSculpt & OptraSculpt Pad System Kit		683066
Instrument single-ended	1 x	
Instrument double-ended	1 x	
Pads 4 mm	60 x	
Ball	20 x	
Chisel	20 x	
Point	20 x	
OptraSculpt Starter Kit		683067
Instrument double-ended	1 x	
Ball	20 x	
Chisel	20 x	
Point	20 x	
OptraSculpt Refill ball	60 x	683068
OptraSculpt Refill chisel	60 x	683069
OptraSculpt Refill point	60 x	683100
OptraSculpt Instrument double-ended Refill	1 x	683154

OptraSculpt® Pad

OptraSculpt® Pad is a contouring instrument with special foam pad attachments designed for the efficient, non-stick forming and shaping of composites. The highly flexible synthetic foam pads optimally adjust to the anatomical contours and allow a smooth modelling, without leaving any unwanted marks on the composite restoration.



Reference scale on the instrument handle:

The continuous vertical lines show ideal average widths, the dotted vertical lines average axial inclinations of the maxillary anterior teeth.

Indication:

Suitable for adapting, shaping and contouring uncured sculptable composite materials. It is also available for lab composites.

Advantages:

- Anti-stick effect: reduced adhesion of the composite to the instrument
- Professional esthetics due to homogeneous surface design and reference scales on the instrument handle
- Reduced effort required for finishing and polishing

Delivery form

Assortment		639791
OptraSculpt Pad Instrument	1x	
OptraSculpt Pad Refill/4 mm	60x	
OptraSculpt Pad Refill/6 mm	60x	
OptraSculpt® Pad Refill/4 mm	60x	639792
OptraSculpt® Pad Refill/6 mm	60x	639793
OptraSculpt® Pad Instrument Refill	1x	646004

OptraSculpt®

Modelling instrument that facilitates working with composite materials. It consists of two high-quality basic instruments as well as special, slightly elastic modelling tips in six different shapes.



Indication:

Modelling of composite materials.

Advantages:

- Anti-stick effect: reduced adhesion of the composite to the instrument
- Six attachments for different indications
- Reduced effort required for finishing and polishing

Delivery form

Assortment		577273
OptraSculpt single-sided, OptraSculpt double-sided	1x each	
OptraSculpt ball, OptraSculpt point	40x each	
OptraSculpt spatula, OptraSculpt chisel	40x each	
OptraSculpt cylinder, OptraSculpt pyramid	40x each	
Refill OptraSculpt single-sided	1x	590756
Refill OptraSculpt double-sided	1x	590757
Refill chisel	100x	590762
Refill cylinder	100x	590761
Refill point	100x	590759
Refill pyramid	100x	590763
Refill spatula	100x	590760
Refill ball	100x	590758

OptraPol®

Efficient and advanced one-step polishing system with a high concentration of diamond particles. A high-gloss finish and smooth surfaces are achieved in only one working step. OptraPol® polishers can be autoclaved and re-used.

Shapes:

- Small flame
- Large flame
- Cup
- Lens



Indication:

OptraPol provides efficient high-gloss polishing results in just one step. It is indicated for the high gloss polishing of direct and indirect restorations made of all popular types of composite material as well as for amalgam restorations.

Advantages:

- One-step polishing system
- Radiant high-gloss restoration surfaces in only one step
- High wear resistance
- Autoclavable and reusable

Delivery form

Assortment/18	634464
Small flame	6x
Large flame, cup, lens	4x each

Refill

Cup	10x	634459
Large flame	10x	634461
Small flame	10x	634458
Lens	10x	634460

OptraFine®

Highly efficient diamond polishing system, especially designed to meet the high esthetic requirements of ceramic polishing. Polishing instruments with a high content of diamond particles.

Shapes:

- Flame
- Cup
- Disc
- Nylon brushes and diamond polishing paste for high-gloss polishing



Indication:

High-gloss polishing of dental ceramic restorations

Advantages:

- Especially designed for ceramic materials
- Particularly smooth restoration surfaces
- High wear resistance
- Autoclavable and reusable

Delivery form

Assortment	601989
F Flame, F Cup, F Disc	2x each
P Flame, P Cup, P Disc	2x each
HP Nylon Brush	6x
HP Polishing Paste	1x

Refill OptraFine® F (light blue)

Flame	10x	601994
Cup	10x	601990
Disc	10x	601992

Refill OptraFine® P (dark blue)

Flame	10x	601995
Cup	10x	601991
Disc	10x	601993

Refill OptraFine® HP Nylon Brush 10x 602288

Refill OptraFine® HP Polishing Paste 1x 602289

Astropol®

Indication:

Astropol is indicated for the pre-polishing and polishing of restorations made of composite material and amalgam.

Astropol® F

Polishing tips (grey) for the removal of excess composite material from proximal and occlusal surfaces

Astropol® P

Polishing tips (green) for polishing composite materials

Astropol® HP

Polishing tips (pink) for final high-gloss

Shapes:

- Small flame
- Large flame
- Cup
- Disc



Delivery form

Assortment 557625

Astropol F: Small flame, large flame, cup, disc	3x each
Astropol P: Small flame, large flame, cup, disc	2x each
Astropol HP: Small flame, large flame, cup, disc	1x each

Refill Astropol® F (grey)

Small flame	6x	557615
Large flame	6x	557616
Cup	6x	557617
Disc	6x	557618

Refill Astropol® P (green)

Small flame	6x	557614
Large flame	6x	557621
Cup	6x	557619
Disc	6x	557620

Refill Astropol® HP (pink)

Small flame	3x	557613
Large flame	3x	557622
Cup	3x	557623
Disc	3x	557624

Politip®

Multiple-use, 2-step polishing system for composites and amalgam.

Indication:

Politip® is indicated for the polishing of restorations made of composite material and amalgam.

Shapes:

- Small cup
- Large cup
- Flame



Delivery form

Assortment Politip® Polisher (P) / Finisher (F) 551580

Finisher shapes:	flame	6x
	large cup, small cup	3x each
Polisher shapes:	flame	6x
	large cup, small cup	3x each

Refill Politip®-F

Flame	6x	533602
Large cup	6x	533603
Small cup	6x	533604

Refill Politip®-P

Flame	6x	533584
Large cup	6x	533585
Small cup	6x	533587

OptraStick®

OptraStick® is a flexible placement instrument which features a ball-shaped, flexible adhesive tip. The tip allows small objects, inlays, onlays and veneers (e.g. made of a IPS Empress®, IPS e.max®) to be picked up, held, carried and placed quickly and easily.



Advantages:

- Easy pick-up
- Strong adherence
- Secure positioning

Delivery form

Refill	50x (5 x 10)	612600
--------	--------------	--------

Cavifil® Injector

Instrument for the application of dental restorative materials from Ivoclar Vivadent supplied in Cavifils.



Delivery form

Refill Cavifil® Injector "New Design"	1x	627882
---------------------------------------	----	--------

VivaPad

Light-protected mixing plate for dual- and light-curing composites and adhesives.



Delivery form

VivaPad	1x	533648
---------	----	--------

Polyart Mixing Pad

Universally usable mixing pad with 60 pages to tear off.

Size:

- Size 50 x 70mm



Delivery form

Mixing Pad

50 x 70mm	1x	591204
-----------	----	--------

Brush Holders

This double-ended brush holder is used to hold soft and hard brushes, as well as Vivabrushes.



Delivery form

Brush Holders

Purple	1x	538895
Red	1x	538894
Dark-orange	1x	538893
Orange	1x	538892
White	1x	573676

Brushes, hard

Disposable brushes for the application of liquid dental materials.



Delivery form

Refill	50x	533664
--------	-----	--------

Brushes, soft

Disposable brushes for the application of low-viscosity dental materials.



Delivery form

Refill	50x	533670
--------	-----	--------

Vivabrush

Disposable application aid for varnishes, gels, and sealants (to mount on brush holder).



Delivery form

Refill	50x	550430
--------	-----	--------

VivaBrush G

The disposable applicator allows the application of fine, smooth layers of varnish e.g. Fluor Protector or Fluor Protector S either selectively or over larger areas.



Delivery form

Refill	50x	631170
--------	-----	--------

Vivadent® Applicator

Disposable brushes for the activation of liquid and low-viscosity dental materials.

Available in four sizes/shapes:

- Regular (blue) for normal restorations
- Small (violet) for micro-cavities
- White
- Green



Delivery form

Applicator		
Regular	50x	631699
Small	25x	562168
White	50x	603949
Green	50x	664698

Cannulas

Application tips for syringes and bottles.

		Delivery form	
	Application tips Redesign ø 0.4 mm	20x	634847
	for IPS Empress Direct Color, Helioseal Clear		
	Application tips Redesign ø 0.6 mm	20x	634819
	for Helioseal F, Total Etch		
	Application tips Redesign ø 0.9 mm	20x	634849
	for Tetric EvoFlow, IPS Empress Direct Flow, IPS Empress Direct Opaque		
	Application tips Redesign ø 1.2 mm	20x	669838
	for Tetric EvoFlow Bulk Fill		
	Application tips ø 0.4 mm	20x	556745
	for Helioseal Clear		
	Application tips ø 0.6 mm	20x	579862
	for Helioseal F		
	Application tips ø 0.9 mm	20x	556744
	for Heliomolar Flow		
	VivaPen Snap-on Cannulas for Adhese Universal, ExcITE F		
		100x	627178
		300x	627161
	Application tips	20x	533669
	for Heliobond-/Helioseal bottles		
	Application tips	20x	533666
	for Email Preparator blue		
	Application tips ø 0.9 mm (blue)	20x	550587
	for Total Etch		
	Application tips	20x	559224
	for Variolink II		

Ivoclar Vivadent – worldwide

Ivoclar Vivadent AG

Bendererstrasse 2
9494 Schaan
Liechtenstein
Tel. +423 235 35 35
Fax +423 235 33 60
www.ivoclarvivadent.com

Ivoclar Vivadent Pty. Ltd.

1 – 5 Overseas Drive
P.O. Box 367
Noble Park, Vic. 3174
Australia
Tel. +61 3 9795 9599
Fax +61 3 9795 9645
www.ivoclarvivadent.com.au

Ivoclar Vivadent GmbH

Tech Gate Vienna
Donau-City-Strasse 1
1220 Wien
Austria
Tel. +43 1 263 191 10
Fax: +43 1 263 191 111
www.ivoclarvivadent.at

Ivoclar Vivadent Ltda.

Alameda Caiapós, 723
Centro Empresarial Tamboré
CEP 06460-110 Barueri – SP
Brazil
Tel. +55 11 2424 7400
Fax +55 11 3466 0840
www.ivoclarvivadent.com.br

Ivoclar Vivadent Inc.

1-6600 Dixie Road
Mississauga, Ontario
L5T 2Y2
Canada
Tel. +1 905 670 8499
Fax +1 905 670 3102
www.ivoclarvivadent.us

Ivoclar Vivadent Shanghai Trading Co., Ltd.

2/F Building 1, 881 Wuding Road,
Jing An District
200040 Shanghai
China
Tel. +86 21 6032 1657
Fax +86 21 6176 0968
www.ivoclarvivadent.com

Ivoclar Vivadent Marketing Ltd.

Calle 134 No. 7-B-83, Of. 520
Bogotá
Colombia
Tel. +57 1 627 3399
Fax +57 1 633 1663
www.ivoclarvivadent.co

Ivoclar Vivadent SAS

B.P. 118
F-74410 Saint-Jorioz
France
Tel. +33 4 50 88 64 00
Fax +33 4 50 68 91 52
www.ivoclarvivadent.fr

Ivoclar Vivadent GmbH

Dr. Adolf-Schneider-Str. 2
D-73479 Ellwangen, Jagst
Germany
Tel. +49 7961 889 0
Fax +49 7961 6326
www.ivoclarvivadent.de

Wieland Dental + Technik

GmbH & Co. KG
Lindenstrasse 2
75175 Pforzheim
Germany
Tel. +49 7231 3705 0
Fax +49 7231 3579 59
www.wieland-dental.com

Ivoclar Vivadent Marketing (India) Pvt. Ltd.

503/504 Raheja Plaza
15 B Shah Industrial Estate
Veera Desai Road, Andheri (West)
Mumbai, 400 053
India
Tel. +91 22 2673 0302
Fax +91 22 2673 0301
www.ivoclarvivadent.in

Ivoclar Vivadent Marketing Ltd.

The Icon
Horizon Broadway BSD
Block M5 No. 1
Kecamatan Cisauk Kelurahan Sampora
15345 Tangerang Selatan – Banten
Indonesia
Tel. +62 21 3003 2932
Fax +62 21 3003 2934

Ivoclar Vivadent s.r.l.

Via Isonzo 67/69
40033 Casalecchio di Reno (BO)
Italy
Tel. +39 051 6113555
Fax +39 051 6113565
www.ivoclarvivadent.it

Ivoclar Vivadent K.K.

1-28-24-4F Hongo
Bunkyo-ku
Tokyo 113-0033
Japan
Tel. +81 3 6903 3535
Fax +81 3 5844 3657
www.ivoclarvivadent.jp

Ivoclar Vivadent Ltd.

12F W-Tower
54 Seocho-daero 77-gil, Seocho-gu
Seoul, 06611
Republic of Korea
Tel. +82 2 536 0714
Fax +82 2 596 0155
www.ivoclarvivadent.co.kr

Ivoclar Vivadent S.A. de C.V.

Calzada de Tlalpan 564,
Col Moderna, Del Benito Juárez
03810 México, D.F.
México
Tel. +52 (55) 50 62 10 00
Fax +52 (55) 50 62 10 29
www.ivoclarvivadent.com.mx

Ivoclar Vivadent BV

De Fruittuin 32
2132 NZ Hoofddorp
Netherlands
Tel. +31 23 529 3791
Fax +31 23 555 4504
www.ivoclarvivadent.com

Ivoclar Vivadent Ltd.

12 Omega St, Rosedale
PO Box 303011 North Harbour
Auckland 0751
New Zealand
Tel. +64 9 914 9999
Fax +64 9 914 9990
www.ivoclarvivadent.co.nz

Ivoclar Vivadent Polska Sp. z o.o.

ul. Jana Pawla II 78
00-175 Warszawa
Poland
Tel. +48 22 635 5496
Fax +48 22 635 5469
www.ivoclarvivadent.pl

Ivoclar Vivadent LLC

Prospekt Andropova 18 korp. 6/
office 10-06
115432 Moscow
Russia
Tel. +7 499 418 0300
Fax +7 499 418 0310
www.ivoclarvivadent.ru

Ivoclar Vivadent Marketing Ltd.

Qlaya Main St.
Siricon Building No.14, 2nd Floor
Office No. 204
P.O. Box 300146
Riyadh 11372
Saudi Arabia
Tel. +966 11 293 8345
Fax +966 11 293 8344
www.ivoclarvivadent.com

Ivoclar Vivadent S.L.U.

Carretera de Fuencarral nº24
Portal 1 – Planta Baja
28108-Alcobendas (Madrid)
Spain
Tel. +34 91 375 78 20
Fax +34 91 375 78 38
www.ivoclarvivadent.es

Ivoclar Vivadent AB

Dalvägen 14
S-169 56 Solna
Sweden
Tel. +46 8 514 939 30
Fax +46 8 514 939 40
www.ivoclarvivadent.se

Ivoclar Vivadent Liaison Office

: Tesvikiye Mahallesi
Sakayik Sokak
Nisantas' Plaza No:38/2
Kat:5 Daire:24
34021 Sisli – Istanbul
Turkey
Tel. +90 212 343 0802
Fax +90 212 343 0842
www.ivoclarvivadent.com

Ivoclar Vivadent Limited

Compass Building
Feldspar Close
Warrens Business Park
Enderby
Leicester LE19 4SD
United Kingdom
Tel. +44 116 284 7880
Fax +44 116 284 7881
www.ivoclarvivadent.co.uk

Ivoclar Vivadent, Inc.

175 Pineview Drive
Amherst, N.Y. 14228
USA
Tel. +1 800 533 6825
Fax +1 716 691 2285
www.ivoclarvivadent.us